

ARG59243 anti-UBA2 / SAE2 antibody

Package: 100 µl
Store at: -20°C

Summary

Product Description	Rabbit Polyclonal antibody recognizes UBA2 / SAE2
Tested Reactivity	Hu
Tested Application	WB
Host	Rabbit
Clonality	Polyclonal
Isotype	IgG
Target Name	UBA2 / SAE2
Species	Human
Immunogen	Synthetic peptide derived from Human UBA2 / SAE2.
Conjugation	Un-conjugated
Alternate Names	EC 6.3.2.-; Anthracycline-associated resistance ARX; ARX; SUMO-activating enzyme subunit 2; SAE2; Ubiquitin-like modifier-activating enzyme 2; Ubiquitin-like 1-activating enzyme E1B; HRIHFB2115

Application Instructions

Application table	<table> <tr> <th>Application</th><th>Dilution</th></tr> <tr> <td>WB</td><td>1:500 - 1:2000</td></tr> </table>	Application	Dilution	WB	1:500 - 1:2000
Application	Dilution				
WB	1:500 - 1:2000				
Application Note	* The dilutions indicate recommended starting dilutions and the optimal dilutions or concentrations should be determined by the scientist.				
Observed Size	~ 88 kDa				

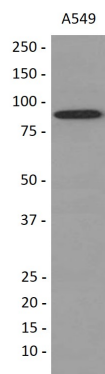
Properties

Form	Liquid
Purification	Affinity purified.
Buffer	PBS (pH 7.4), 150mM NaCl, 0.02% Sodium azide and 50% Glycerol.
Preservative	0.02% Sodium azide
Stabilizer	50% Glycerol
Storage instruction	For continuous use, store undiluted antibody at 2-8°C for up to a week. For long-term storage, aliquot and store at -20°C. Storage in frost free freezers is not recommended. Avoid repeated freeze/thaw cycles. Suggest spin the vial prior to opening. The antibody solution should be gently mixed before use.
Note	For laboratory research only, not for drug, diagnostic or other use.

Bioinformation

Gene Symbol	UBA2
Gene Full Name	ubiquitin-like modifier activating enzyme 2
Background	Posttranslational modification of proteins by the addition of the small protein SUMO (see SUMO1; MIM 601912), or sumoylation, regulates protein structure and intracellular localization. SAE1 (MIM 613294) and UBA2 form a heterodimer that functions as a SUMO-activating enzyme for the sumoylation of proteins (Okuma et al., 1999 [PubMed 9920803]).[supplied by OMIM, Mar 2010]
Function	The heterodimer acts as a E1 ligase for SUMO1, SUMO2, SUMO3, and probably SUMO4. It mediates ATP-dependent activation of SUMO proteins followed by formation of a thioester bond between a SUMO protein and a conserved active site cysteine residue on UBA2/SAE2. [UniProt]
Calculated Mw	71 kDa
PTM	Sumoylated with SUMO1 and SUMO2/3 and by UBC9. Sumoylation at Lys-236 inhibits enzymatic activity. Sumoylation at the C-terminal lysine cluster plays an essential role in nuclear trafficking. [UniProt]
Cellular Localization	Cytoplasm. Nucleus. Note=Shuttles between the cytoplasm and the nucleus, sumoylation is required either for nuclear translocation or nuclear retention. [UniProt]

Images



ARG59243 anti-UBA2 / SAE2 antibody WB image

Western blot: A549 cell lysate stained with ARG59243 anti-UBA2 / SAE2 antibody.