

## ARG59270 anti-SPTLC1 antibody

Package: 50 µg  
Store at: -20°C

### Summary

|                     |  |
|---------------------|--|
| Product Description | Rabbit Polyclonal antibody recognizes SPTLC1   |
| Tested Reactivity   | Hu   |
| Predict Reactivity  | Hm   |
| Tested Application  | IHC-P, WB  |
| Host                | Rabbit   |
| Clonality           | Polyclonal   |
| Isotype             | IgG  |
| Target Name         | SPTLC1   |
| Species             | Human  |
| Immunogen           | Synthetic peptide corresponding to aa. 138-154 of Human SPTLC1. (FYGTFDVHLDLEDRLAK)  |
| Conjugation         | Un-conjugated  |
| Alternate Names     | SPT1; LCB1; Serine palmitoyltransferase 1; Serine-palmitoyl-CoA transferase 1; EC 2.3.1.50; LCB1; SPT1; SPT 1; Long chain base biosynthesis protein 1; HSN1; LCB 1; HSN1 |

### Application Instructions

|                   |  |                 |
|-------------------|--|-----------------|
| Application table | Application  | Dilution        |
|                   | IHC-P  | 0.5 - 1 µg/ml   |
|                   | WB   | 0.1 - 0.5 µg/ml |
| Application Note  | IHC-P: Antigen Retrieval: By heat mediation.<br>* The dilutions indicate recommended starting dilutions and the optimal dilutions or concentrations should be determined by the scientist. |                 |
| Observed Size     | 53 kDa   |                 |

### Properties

|                     |  |
|---------------------|--|
| Form                | Liquid   |
| Purification        | Affinity purification with immunogen.  |
| Buffer              | 0.9% NaCl, 0.2% Na2HPO4, 0.05% Thimerosal, 0.05% Sodium azide and 5% BSA.  |
| Preservative        | 0.05% Thimerosal and 0.05% Sodium azide  |
| Stabilizer          | 5% BSA   |
| Concentration       | 0.5 mg/ml  |
| Storage instruction | For continuous use, store undiluted antibody at 2-8°C for up to a week. For long-term storage, aliquot and store at -20°C or below. Storage in frost free freezers is not recommended. Avoid repeated freeze/thaw cycles. Suggest spin the vial prior to opening. The antibody solution should be gently mixed |

before use.

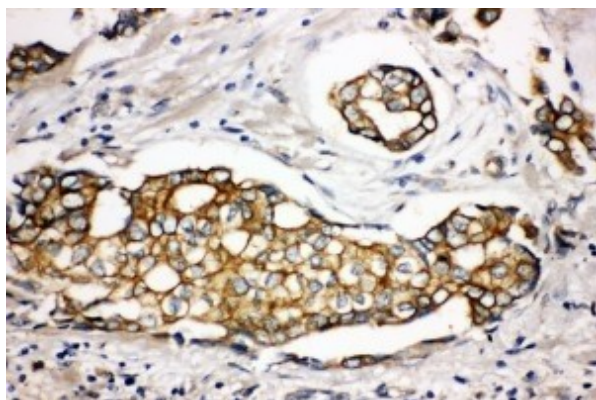
#### Note

For laboratory research only, not for drug, diagnostic or other use.

## Bioinformation

|                       |  |
|-----------------------|--|
| Gene Symbol           | SPTLC1   |
| Gene Full Name        | serine palmitoyltransferase, long chain base subunit 1   |
| Background            | This gene encodes a member of the class-II pyridoxal-phosphate-dependent aminotransferase family. The encoded protein is the long chain base subunit 1 of serine palmitoyltransferase. Serine palmitoyltransferase converts L-serine and palmitoyl-CoA to 3-oxosphinganine with pyridoxal 5'-phosphate and is the key enzyme in sphingolipid biosynthesis. Mutations in this gene were identified in patients with hereditary sensory neuropathy type 1. Alternatively spliced variants encoding different isoforms have been identified. Pseudogenes of this gene have been defined on chromosomes 1, 6, 10, and 13. [provided by RefSeq, Jul 2013]       |
| Function              | Serine palmitoyltransferase (SPT). The heterodimer formed with SPTLC2 or SPTLC3 constitutes the catalytic core. The composition of the serine palmitoyltransferase (SPT) complex determines the substrate preference. The SPTLC1-SPTLC2-SPTSSA complex shows a strong preference for C16-CoA substrate, while the SPTLC1-SPTLC3-SPTSSA isozyme uses both C14-CoA and C16-CoA as substrates, with a slight preference for C14-CoA. The SPTLC1-SPTLC2-SPTSSB complex shows a strong preference for C18-CoA substrate, while the SPTLC1-SPTLC3-SPTSSB isozyme displays an ability to use a broader range of acyl-CoAs, without apparent preference. [UniProt] |
| Calculated Mw         | 53 kDa   |
| PTM                   | Phosphorylation at Tyr-164 inhibits activity and promotes cell survival. [UniProt]   |
| Cellular Localization | Endoplasmic reticulum membrane; Single-pass membrane protein. [UniProt]  |

## Images



ARG59270 anti-SPTLC1 antibody IHC-P image

Immunohistochemistry: Paraffin-embedded Human mammary cancer stained with ARG59270 anti-SPTLC1 antibody.



ARG59270 anti-SPTLC1 antibody WB image

Western blot: 40 µg of SW620, A549, PANC and U87 whole cell lysates stained with ARG59270 anti-SPTLC1 antibody at 0.5 µg/ml dilution.