

ARG59285 anti-Arginase 1 antibody

Package: 100 µl
Store at: -20°C

Summary

Product Description	Rabbit Polyclonal antibody recognizes Arginase 1
Tested Reactivity	Hu, Ms, Rat
Tested Application	ICC/IF, WB
Host	Rabbit
Clonality	Polyclonal
Isotype	IgG
Target Name	Arginase 1
Species	Human
Immunogen	Recombinant fusion protein corresponding to aa. 1-322 of Human Arginase 1 (NP_000036.2).
Conjugation	Un-conjugated
Alternate Names	EC 3.5.3.1; Type I arginase; Arginase-1; Liver-type arginase

Application Instructions

Application table	Application	Dilution
	ICC/IF	1:50 - 1:200
	WB	1:500 - 1:2000
Application Note	* The dilutions indicate recommended starting dilutions and the optimal dilutions or concentrations should be determined by the scientist.	
Positive Control	Mouse liver	
Observed Size	36 kDa	

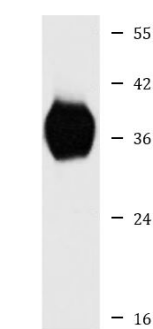
Properties

Form	Liquid
Purification	Affinity purified.
Buffer	PBS (pH 7.3), 0.02% Sodium azide and 50% Glycerol.
Preservative	0.02% Sodium azide
Stabilizer	50% Glycerol
Storage instruction	For continuous use, store undiluted antibody at 2-8°C for up to a week. For long-term storage, aliquot and store at -20°C. Storage in frost free freezers is not recommended. Avoid repeated freeze/thaw cycles. Suggest spin the vial prior to opening. The antibody solution should be gently mixed before use.
Note	For laboratory research only, not for drug, diagnostic or other use.

Bioinformation

Gene Symbol	ARG1
Gene Full Name	arginase 1
Background	Arginase catalyzes the hydrolysis of arginine to ornithine and urea. At least two isoforms of mammalian arginase exist (types I and II) which differ in their tissue distribution, subcellular localization, immunologic crossreactivity and physiologic function. The type I isoform encoded by this gene, is a cytosolic enzyme and expressed predominantly in the liver as a component of the urea cycle. Inherited deficiency of this enzyme results in argininemia, an autosomal recessive disorder characterized by hyperammonemia. Two transcript variants encoding different isoforms have been found for this gene. [provided by RefSeq, Sep 2011]
Calculated Mw	35 kDa
Cellular Localization	Cytoplasm. Cytoplasmic granule. Note=Localized in azurophil granules of neutrophils (PubMed:15546957). [UniProt]

Images



Mouse liver

ARG59285 anti-Arginase 1 antibody WB image

Western blot: 25 µg of Mouse liver lysate stained with ARG59285 anti-Arginase 1 antibody at 1:2000 dilution.