

ARG59314 anti-RND1 antibody

Package: 50 µg
Store at: -20°C

Summary

Product Description	Rabbit Polyclonal antibody recognizes RND1
Tested Reactivity	Ms
Predict Reactivity	Hu
Tested Application	WB
Host	Rabbit
Clonality	Polyclonal
Isotype	IgG
Target Name	RND1
Species	Human
Immunogen	Recombinant protein corresponding to K105-C229 of Human RND1.
Conjugation	Un-conjugated
Alternate Names	Rho-related GTP-binding protein Rho6; ARHS; RHOS; RHO6; Rnd1; Rho family GTPase 1

Application Instructions

Application table	Application	Dilution
	WB	0.1 - 0.5 µg/ml
Application Note	* The dilutions indicate recommended starting dilutions and the optimal dilutions or concentrations should be determined by the scientist.	

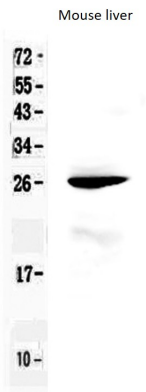
Properties

Form	Liquid
Purification	Affinity purification with immunogen.
Buffer	0.9% NaCl, 0.2% Na ₂ HPO ₄ , 0.05% Sodium azide and 5% BSA.
Preservative	0.05% Sodium azide
Stabilizer	5% BSA
Concentration	0.5 mg/ml
Storage instruction	For continuous use, store undiluted antibody at 2-8°C for up to a week. For long-term storage, aliquot and store at -20°C or below. Storage in frost free freezers is not recommended. Avoid repeated freeze/thaw cycles. Suggest spin the vial prior to opening. The antibody solution should be gently mixed before use.
Note	For laboratory research only, not for drug, diagnostic or other use.

Bioinformation

Gene Symbol	RND1
Gene Full Name	Rho family GTPase 1
Background	This gene encodes a protein that belongs to the Rho GTPase family. Members of this family regulate the organization of the actin cytoskeleton in response to extracellular growth factors. A similar protein in rat interacts with a microtubule regulator to control axon extension. [provided by RefSeq, Apr 2014]
Function	Lacks intrinsic GTPase activity. Has a low affinity for GDP, and constitutively binds GTP. Controls rearrangements of the actin cytoskeleton. Induces the Rac-dependent neuritic process formation in part by disruption of the cortical actin filaments. Causes the formation of many neuritic processes from the cell body with disruption of the cortical actin filaments. [UniProt]
Calculated Mw	26 kDa
Cellular Localization	Cell membrane; Lipid-anchor; Cytoplasmic side. Cytoplasm, cytoskeleton. [UniProt]

Images



ARG59314 anti-RND1 antibody WB image

Western blot: 50 µg of samples under reducing conditions. Mouse liver lysate stained with ARG59314 anti-RND1 antibody at 0.5 µg/ml, overnight at 4°C.