

## ARG59333 anti-KChIP2 antibody

Package: 50 µg  
Store at: -20°C

### Summary

Product Description	Rabbit Polyclonal antibody recognizes KChIP2
Tested Reactivity	Hu, Ms, Rat
Predict Reactivity	Chk
Tested Application	FACS, ICC/IF, IHC-P, WB
Host	Rabbit
Clonality	Polyclonal
Isotype	IgG
Target Name	KChIP2
Species	Human
Immunogen	Synthetic peptide corresponding to aa. 78-112 of Human KChIP2. (DEFELSTVCHRPEGLEQLQEQTKEFTRKELQVLYR)
Conjugation	Un-conjugated
Alternate Names	Potassium channel-interacting protein 2; A-type potassium channel modulatory protein 2; Kv channel-interacting protein 2; Cardiac voltage-gated potassium channel modulatory subunit; KCHIP2; KChIP2

### Application Instructions

Application table	Application	Dilution
	FACS	1:150 - 1:500
	ICC/IF	1:200 - 1:1000
	IHC-P	0.5 - 1 µg/ml
	WB	0.1 - 0.5 µg/ml
Application Note	IHC-P: Antigen Retrieval: By heat mediation. * The dilutions indicate recommended starting dilutions and the optimal dilutions or concentrations should be determined by the scientist.	

### Properties

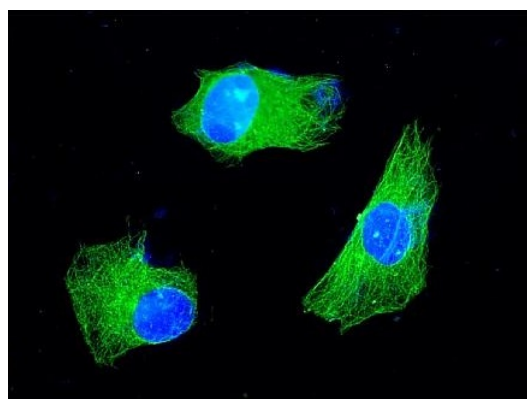
Form	Liquid
Purification	Affinity purification with immunogen.
Buffer	0.9% NaCl, 0.2% Na <sub>2</sub> HPO <sub>4</sub> , 0.05% Sodium azide and 5% BSA.
Preservative	0.05% Sodium azide
Stabilizer	5% BSA
Concentration	0.5 mg/ml

Storage instruction	For continuous use, store undiluted antibody at 2-8°C for up to a week. For long-term storage, aliquot and store at -20°C or below. Storage in frost free freezers is not recommended. Avoid repeated freeze/thaw cycles. Suggest spin the vial prior to opening. The antibody solution should be gently mixed before use.
Note	For laboratory research only, not for drug, diagnostic or other use.

## Bioinformation

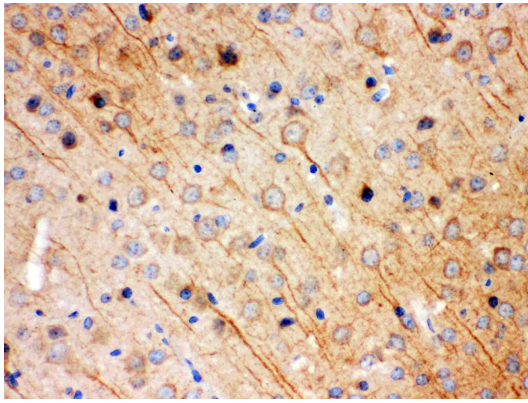
Gene Symbol	KCNIP2
Gene Full Name	Kv channel interacting protein 2
Background	This gene encodes a member of the family of voltage-gated potassium (Kv) channel-interacting proteins (KCNIPs), which belongs to the recoverin branch of the EF-hand superfamily. Members of the KCNIP family are small calcium binding proteins. They all have EF-hand-like domains, and differ from each other in the N-terminus. They are integral subunit components of native Kv4 channel complexes. They may regulate A-type currents, and hence neuronal excitability, in response to changes in intracellular calcium. Multiple alternatively spliced transcript variants encoding distinct isoforms have been identified from this gene. [provided by RefSeq, Jul 2008]
Function	Regulatory subunit of Kv4/D (Shal)-type voltage-gated rapidly inactivating A-type potassium channels. Modulates channel density, inactivation kinetics and rate of recovery from inactivation in a calcium-dependent and isoform-specific manner. In vitro, modulates KCND2/Kv4.2 and KCND3/Kv4.3 currents. Involved in KCND2 and KCND3 trafficking to the cell surface. May be required for the expression of I(To) currents in the heart (By similarity). [UniProt]
Calculated Mw	31 kDa
PTM	Palmitoylated. Palmitoylation enhances association with the plasma membrane. [UniProt]
Cellular Localization	Isoform 1: Cell membrane; Lipid-anchor. Note=Detected on lipid rafts (By similarity). Isoform 2: Cell membrane; Lipid-anchor. Isoform 6: Cell membrane; Lipid-anchor. [UniProt]

## Images



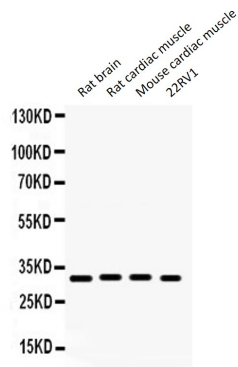
ARG59333 anti-KChIP2 antibody ICC/IF image

Immunofluorescence: SH-SY5Y cells were blocked with 10% goat serum and then stained with ARG59333 anti-KChIP2 antibody (green) at 2 µg/ml dilution, overnight at 4°C. DAPI (blue) for nuclear staining.



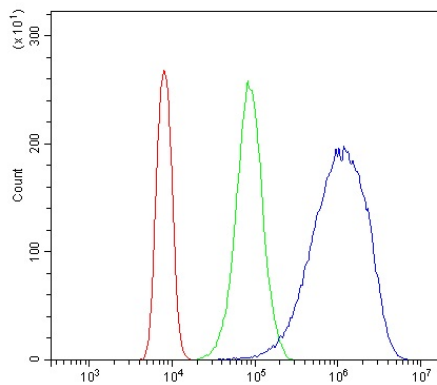
ARG59333 anti-KChIP2 antibody IHC-P image

Immunohistochemistry: Paraffin-embedded Mouse brain stained with ARG59333 anti-KChIP2 antibody.



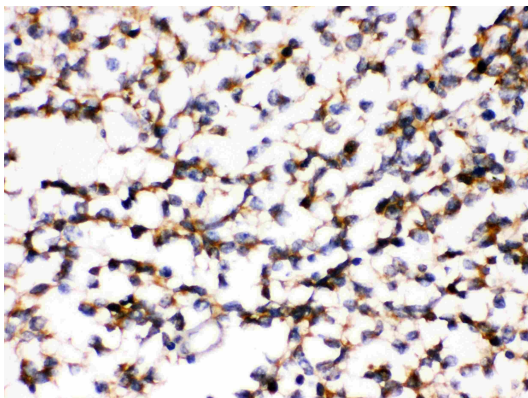
ARG59333 anti-KChIP2 antibody WB image

Western blot: 50 ug of Rat brain, 50 ug of Rat cardiac muscle, 50 ug of Mouse cardiac muscle and 40 ug of 22RV1 whole cell lysates stained with ARG59333 anti-KChIP2 antibody at 0.5 ug/ml dilution.



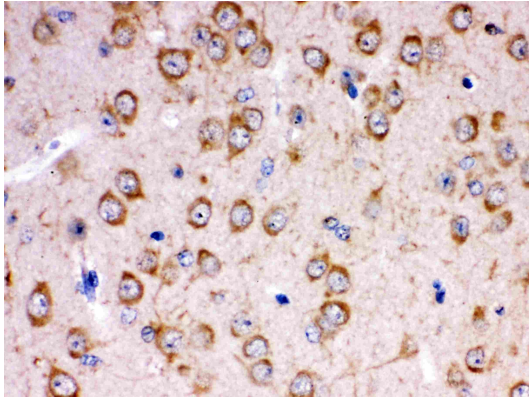
ARG59333 anti-KChIP2 antibody FACS image

Flow Cytometry: K562 cells were blocked with 10% normal goat serum and then stained with ARG59333 anti-KChIP2 antibody (blue) at  $1 \mu\text{g}/10^6$  cells for 30 min at  $20^\circ\text{C}$ , followed by incubation with DyLight<sup>®</sup>488 labelled secondary antibody. Isotype control antibody (green) was rabbit IgG ( $1 \mu\text{g}/10^6$  cells) used under the same conditions. Unlabelled sample (red) was also used as a control.



ARG59333 anti-KChIP2 antibody IHC-P image

Immunohistochemistry: Paraffin-embedded Human glioma stained with ARG59333 anti-KChIP2 antibody.



ARG59333 anti-KChIP2 antibody IHC-P image

Immunohistochemistry: Paraffin-embedded Rat brain stained with ARG59333 anti-KChIP2 antibody.