

## ARG59359 anti-Involucrin antibody

Package: 100 µl  
Store at: -20°C

### Summary

Product Description	Rabbit Polyclonal antibody recognizes Involucrin
Tested Reactivity	Hu
Predict Reactivity	Rat
Tested Application	FACS, IHC-P, WB
Host	Rabbit
Clonality	Polyclonal
Isotype	IgG
Target Name	Involucrin
Species	Human
Immunogen	Synthetic peptide derived from Human Involucrin.
Conjugation	Un-conjugated
Alternate Names	Involucrin

### Application Instructions

Application table	Application	Dilution
	FACS	1:10
	IHC-P	1:50 - 1:200
	WB	1:1000 - 1:5000
Application Note	* The dilutions indicate recommended starting dilutions and the optimal dilutions or concentrations should be determined by the scientist.	
Positive Control	A431	
Observed Size	120 ~ 130 kDa	

### Properties

Form	Liquid
Purification	Affinity purified.
Buffer	PBS (pH 7.4), 0.02% Sodium azide and 50% Glycerol.
Preservative	0.02% Sodium azide
Stabilizer	50% Glycerol
Storage instruction	For continuous use, store undiluted antibody at 2-8°C for up to a week. For long-term storage, aliquot and store at -20°C. Storage in frost free freezers is not recommended. Avoid repeated freeze/thaw cycles. Suggest spin the vial prior to opening. The antibody solution should be gently mixed before use.

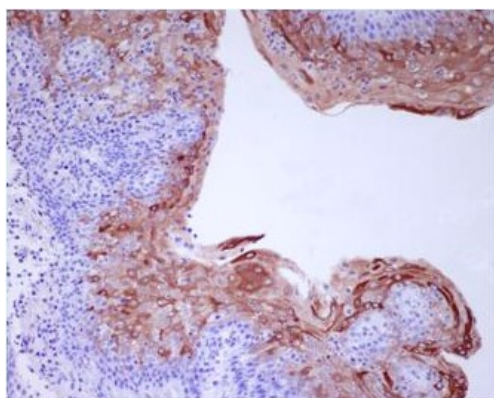
**Note**

For laboratory research only, not for drug, diagnostic or other use.

## Bioinformation

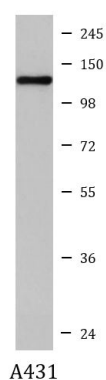
Gene Symbol	IVL
Gene Full Name	involucrin
Background	Involucrin, a component of the keratinocyte crosslinked envelope, is found in the cytoplasm and crosslinked to membrane proteins by transglutaminase. This gene is mapped to 1q21, among calpactin I light chain, trichohyalin, profillaggrin, loricrin, and calcyclin. [provided by RefSeq, Jul 2008]
Function	Part of the insoluble cornified cell envelope (CE) of stratified squamous epithelia. [UniProt]
Calculated Mw	68 kDa
PTM	Substrate of transglutaminase. Some glutamines and lysines are cross-linked to other involucrin molecules, to other proteins such as keratin, desmoplakin, periplakin and envoplakin, and to lipids like omega-hydroxyceramide. [UniProt]
Cellular Localization	Cytoplasm. Note=Constituent of the scaffolding of the cornified envelope. [UniProt]

## Images



ARG59359 anti-Involucrin antibody IHC-P image

Immunohistochemistry: Paraffin-embedded Human tonsil stained with ARG59359 anti-Involucrin antibody.



ARG59359 anti-Involucrin antibody WB image

Western blot: A431 cell lysate stained with ARG59359 anti-Involucrin antibody.