

ARG59390 anti-Smoothelin antibody

Package: 100 µl
Store at: -20°C

Summary

Product Description	Rabbit Polyclonal antibody recognizes Smoothelin
Tested Reactivity	Hu, Ms, Rat
Tested Application	WB
Host	Rabbit
Clonality	Polyclonal
Isotype	IgG
Target Name	Smoothelin
Species	Human
Immunogen	Recombinant fusion protein corresponding to aa. 65-325 of Human Smoothelin (NP_001193946.1).
Conjugation	Un-conjugated
Alternate Names	SMSMO

Application Instructions

Application table	<table> <tr> <th>Application</th><th>Dilution</th></tr> <tr> <td>WB</td><td>1:500 - 1:2000</td></tr> </table>	Application	Dilution	WB	1:500 - 1:2000
Application	Dilution				
WB	1:500 - 1:2000				
Application Note	* The dilutions indicate recommended starting dilutions and the optimal dilutions or concentrations should be determined by the scientist.				
Positive Control	5637				
Observed Size	140 kDa				

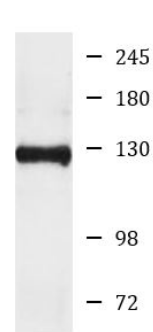
Properties

Form	Liquid
Purification	Affinity purified.
Buffer	PBS (pH 7.3), 0.02% Sodium azide and 50% Glycerol.
Preservative	0.02% Sodium azide
Stabilizer	50% Glycerol
Storage instruction	For continuous use, store undiluted antibody at 2-8°C for up to a week. For long-term storage, aliquot and store at -20°C. Storage in frost free freezers is not recommended. Avoid repeated freeze/thaw cycles. Suggest spin the vial prior to opening. The antibody solution should be gently mixed before use.
Note	For laboratory research only, not for drug, diagnostic or other use.

Bioinformation

Gene Symbol	SMTN
Gene Full Name	smoothelin
Background	This gene encodes a structural protein that is found exclusively in contractile smooth muscle cells. It associates with stress fibers and constitutes part of the cytoskeleton. This gene is localized to chromosome 22q12.3, distal to the TUPLE1 locus and outside the DiGeorge syndrome deletion. Alternative splicing of this gene results in multiple transcript variants encoding distinct isoforms. [provided by RefSeq, May 2011]
Function	Structural protein of the cytoskeleton. [UniProt]
Calculated Mw	99 kDa
Cellular Localization	Cytoplasm, cytoskeleton. Note=Exhibits a filamentous organization. [UniProt]

Images



ARG59390 anti-Smoothelin antibody WB image

Western blot: 25 µg of 5637 cell lysate stained with ARG59390 anti-Smoothelin antibody at 1:1000 dilution.