

## ARG59406 anti-WNK1 antibody

Package: 100 µl  
Store at: -20°C

### Summary

Product Description	Rabbit Polyclonal antibody recognizes WNK1
Tested Reactivity	Hu
Tested Application	ICC/IF, WB
Host	Rabbit
Clonality	Polyclonal
Isotype	IgG
Target Name	WNK1
Species	Human
Immunogen	Recombinant fusion protein corresponding to aa. 1-210 of Human WNK1 (NP_055638.2).
Conjugation	Un-conjugated
Alternate Names	PSK; p65; PRKWNK1; Serine/threonine-protein kinase WNK1; Protein kinase lysine-deficient 1; PPP1R167; Erythrocyte 65 kDa protein; hWNK1; Kinase deficient protein; EC 2.7.11.1; HSN2; KDP; HSN2; Protein kinase with no lysine 1

### Application Instructions

Application table	Application	Dilution
	ICC/IF	1:50 - 1:200
	WB	1:500 - 1:2000
Application Note	* The dilutions indicate recommended starting dilutions and the optimal dilutions or concentrations should be determined by the scientist.	
Positive Control	HeLa	
Observed Size	300 kDa	

### Properties

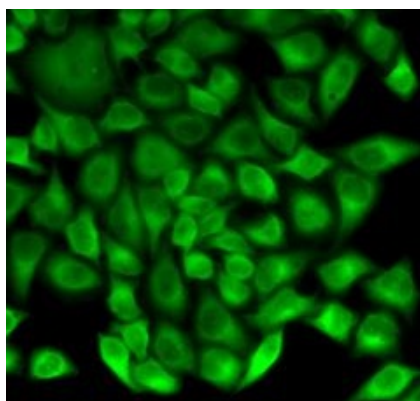
Form	Liquid
Purification	Affinity purified.
Buffer	PBS (pH 7.3), 0.02% Sodium azide and 50% Glycerol.
Preservative	0.02% Sodium azide
Stabilizer	50% Glycerol
Storage instruction	For continuous use, store undiluted antibody at 2-8°C for up to a week. For long-term storage, aliquot and store at -20°C. Storage in frost free freezers is not recommended. Avoid repeated freeze/thaw cycles. Suggest spin the vial prior to opening. The antibody solution should be gently mixed before use.

Note For laboratory research only, not for drug, diagnostic or other use.

## Bioinformation

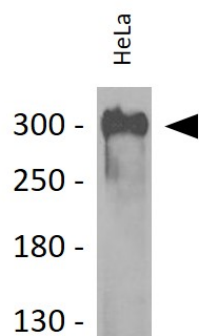
Gene Symbol	WNK1
Gene Full Name	WNK lysine deficient protein kinase 1
Background	This gene encodes a member of the WNK subfamily of serine/threonine protein kinases. The encoded protein may be a key regulator of blood pressure by controlling the transport of sodium and chloride ions. Mutations in this gene have been associated with pseudohypoaldosteronism type II and hereditary sensory neuropathy type II. Alternatively spliced transcript variants encoding different isoforms have been described but the full-length nature of all of them has yet to be determined.[provided by RefSeq, May 2010]
Function	Serine/threonine kinase which plays an important role in the regulation of electrolyte homeostasis, cell signaling, survival, and proliferation. Acts as an activator and inhibitor of sodium-coupled chloride cotransporters and potassium-coupled chloride cotransporters respectively. Activates SCNN1A, SCNN1B, SCNN1D and SGK1. Controls sodium and chloride ion transport by inhibiting the activity of WNK4, by either phosphorylating the kinase or via an interaction between WNK4 and the autoinhibitory domain of WNK1. WNK4 regulates the activity of the thiazide-sensitive Na-Cl cotransporter, SLC12A3, by phosphorylation. WNK1 may also play a role in actin cytoskeletal reorganization. Phosphorylates NEDD4L. Acts as a scaffold to inhibit SLC4A4, SLC26A6 as well as CFTR activities and surface expression, recruits STK39 which mediates the inhibition (By similarity). [UniProt]
Calculated Mw	251 kDa
PTM	O-glycosylated.  Ubiquitinated in vitro by the BCR(KLHL3) complex and in vivo by a BCR(KLHL2) complex, leading to proteasomal degradation. [UniProt]
Cellular Localization	Cytoplasm. [UniProt]

## Images



ARG59406 anti-WNK1 antibody ICC/IF image

Immunofluorescence: HeLa cells stained with ARG59406 anti-WNK1 antibody (green).



#### ARG59406 anti-WNK1 antibody WB image

Western blot: 25 µg of HeLa cell lysate stained with ARG59406 anti-WNK1 antibody at 1:1000 dilution.