

ARG59416 anti-CIP2A / KIAA1524 antibody

Package: 100 µl
Store at: -20°C

Summary

Product Description	Rabbit Polyclonal antibody recognizes CIP2A / KIAA1524
Tested Reactivity	Hu, Ms, Rat
Tested Application	WB
Host	Rabbit
Clonality	Polyclonal
Isotype	IgG
Target Name	CIP2A / KIAA1524
Species	Human
Immunogen	Recombinant fusion protein corresponding to aa. 681-905 of Human KIAA1524 (NP_065941.2).
Conjugation	Un-conjugated
Alternate Names	p90; Cancerous inhibitor of PP2A; CIP2A; p90 autoantigen; Protein CIP2A

Application Instructions

Application table	Application	Dilution
	WB	1:500 - 1:2000
Application Note	* The dilutions indicate recommended starting dilutions and the optimal dilutions or concentrations should be determined by the scientist.	
Positive Control	HeLa, HepG2 and Rat testis	
Observed Size	102 kDa	

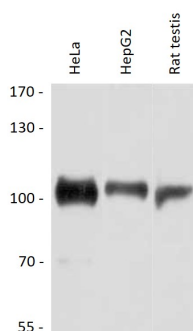
Properties

Form	Liquid
Purification	Affinity purified.
Buffer	PBS (pH 7.3), 0.02% Sodium azide and 50% Glycerol.
Preservative	0.02% Sodium azide
Stabilizer	50% Glycerol
Storage instruction	For continuous use, store undiluted antibody at 2-8°C for up to a week. For long-term storage, aliquot and store at -20°C. Storage in frost free freezers is not recommended. Avoid repeated freeze/thaw cycles. Suggest spin the vial prior to opening. The antibody solution should be gently mixed before use.
Note	For laboratory research only, not for drug, diagnostic or other use.

Bioinformation

Gene Symbol	KIAA1524
Gene Full Name	KIAA1524
Function	Oncoprotein that inhibits PP2A and stabilizes MYC in human malignancies. Promotes anchorage-independent cell growth and tumor formation. [UniProt]
Calculated Mw	102 kDa
Cellular Localization	Membrane; Single-pass membrane protein. Cytoplasm. Note=Slightly concentrates in the perinuclear region (PubMed:12118381). [UniProt]

Images



ARG59416 anti-CIP2A / KIAA1524 antibody WB image

Western blot: 25 µg of HeLa, HepG2 and Rat testis lysates stained with ARG59416 anti-CIP2A / KIAA1524 antibody at 1:3000 dilution.