

ARG59421 anti-SPPL2A antibody

Package: 100 µl
Store at: -20°C

Summary

Product Description	Rabbit Polyclonal antibody recognizes SPPL2A
Tested Reactivity	Hu, Ms, Rat
Tested Application	IHC-P, WB
Host	Rabbit
Clonality	Polyclonal
Isotype	IgG
Target Name	SPPL2A
Species	Human
Immunogen	Recombinant fusion protein corresponding to aa. 421-520 of Human SPPL2A (NP_116191.2).
Conjugation	Un-conjugated
Alternate Names	IMP3; EC 3.4.23.-; IMP-3; Presenilin-like protein 2; Signal peptide peptidase-like 2A; SPPL2a; PSL2; Intramembrane protease 3; SPP-like 2A

Application Instructions

Application table	Application	Dilution
	IHC-P	1:50 - 1:200
	WB	1:200 - 1:2000
Application Note	* The dilutions indicate recommended starting dilutions and the optimal dilutions or concentrations should be determined by the scientist.	
Positive Control	Mouse brain, Jurkat and HeLa	
Observed Size	58 kDa	

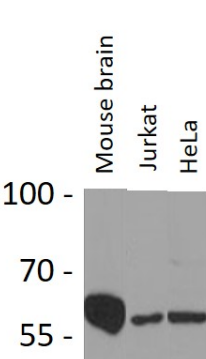
Properties

Form	Liquid
Purification	Affinity purified.
Buffer	PBS (pH 7.3), 0.02% Sodium azide and 50% Glycerol.
Preservative	0.02% Sodium azide
Stabilizer	50% Glycerol
Storage instruction	For continuous use, store undiluted antibody at 2-8°C for up to a week. For long-term storage, aliquot and store at -20°C. Storage in frost free freezers is not recommended. Avoid repeated freeze/thaw cycles. Suggest spin the vial prior to opening. The antibody solution should be gently mixed before use.
Note	For laboratory research only, not for drug, diagnostic or other use.

Bioinformation

Gene Symbol	SPPL2A
Gene Full Name	signal peptide peptidase like 2A
Background	This gene encodes a member of the GXGD family of aspartic proteases, which are transmembrane proteins with two conserved catalytic motifs localized within the membrane-spanning regions, as well as a member of the signal peptide peptidase-like protease (SPPL) family. This protein is expressed in all major adult human tissues and localizes to late endosomal compartments and lysosomal membranes. A pseudogene of this gene also lies on chromosome 15. [provided by RefSeq, Feb 2012]
Function	Intramembrane-cleaving aspartic protease (I-CLiP) that cleaves type II membrane signal peptides in the hydrophobic plane of the membrane. Functions in FASLG, ITM2B and TNF processing. Catalyzes the intramembrane cleavage of the anchored fragment of shed TNF-alpha (TNF), which promotes the release of the intracellular domain (ICD) for signaling to the nucleus. Also responsible for the intramembrane cleavage of Fas antigen ligand FASLG, which promotes the release of the intracellular FasL domain (FasL ICD). May play a role in the regulation of innate and adaptive immunity. Catalyzes the intramembrane cleavage of the simian foamy virus envelope glycoprotein gp130 independently of prior ectodomain shedding by furin or furin-like proprotein convertase (PC)-mediated cleavage proteolysis. [UniProt]
Calculated Mw	58 kDa
PTM	Glycosylated. [UniProt]
Cellular Localization	Late endosome membrane; Multi-pass membrane protein. Lysosome membrane; Multi-pass membrane protein. Membrane; Multi-pass membrane protein; Luminal side. Note=Colocalizes with palmitoylated and myristoylated proteins at the plasma membrane. [UniProt]

Images



ARG59421 anti-SPPL2A antibody WB image

Western blot: 25 µg of Mouse brain, Jurkat and HeLa cell lysates stained with ARG59421 anti-SPPL2A antibody at 1:1000 dilution.