

ARG59465 anti-SMURF1 antibody

Package: 50 µg
Store at: -20°C

Summary

Product Description	Rabbit Polyclonal antibody recognizes SMURF1
Tested Reactivity	Hu, Rat
Predict Reactivity	Hm
Tested Application	FACS, ICC/IF, IHC-P, WB
Host	Rabbit
Clonality	Polyclonal
Isotype	IgG
Target Name	SMURF1
Species	Human
Immunogen	Synthetic peptide corresponding to aa. 326-351 of Human SMURF1. (DHNNRTTQFTDPRLLHIMNHQCQLKE)
Conjugation	Un-conjugated
Alternate Names	hSMURF1; SMAD ubiquitination regulatory factor 1; SMAD-specific E3 ubiquitin-protein ligase 1; EC 6.3.2.-; E3 ubiquitin-protein ligase SMURF1

Application Instructions

Application table	Application	Dilution
	FACS	1:150 - 1:500
	ICC/IF	1:200 - 1:1000
	IHC-P	1:200 - 1:1000
	WB	0.1 - 0.5 µg/ml
Application Note	IHC-P: Antigen Retrieval: Heat mediation was performed in EDTA buffer (pH 8.0). * The dilutions indicate recommended starting dilutions and the optimal dilutions or concentrations should be determined by the scientist.	

Properties

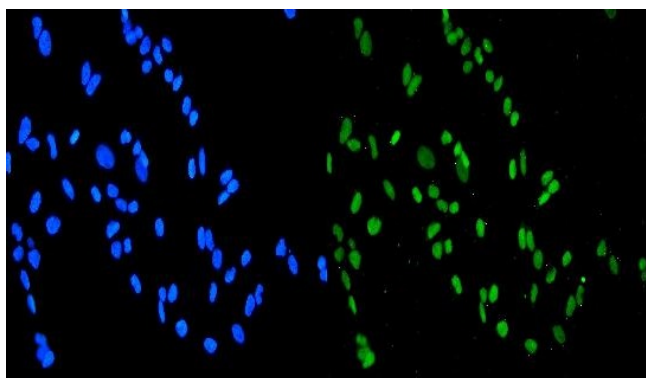
Form	Liquid
Purification	Affinity purification with immunogen.
Buffer	0.9% NaCl, 0.2% Na ₂ HPO ₄ , 0.05% Sodium azide and 5% BSA.
Preservative	0.05% Sodium azide
Stabilizer	5% BSA
Concentration	0.5 mg/ml

Storage instruction	For continuous use, store undiluted antibody at 2-8°C for up to a week. For long-term storage, aliquot and store at -20°C or below. Storage in frost free freezers is not recommended. Avoid repeated freeze/thaw cycles. Suggest spin the vial prior to opening. The antibody solution should be gently mixed before use.
Note	For laboratory research only, not for drug, diagnostic or other use.

Bioinformation

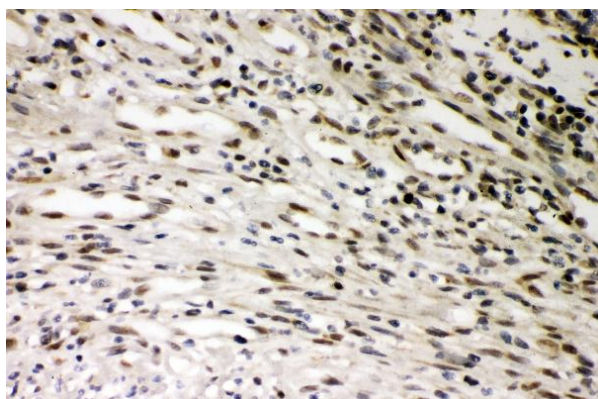
Gene Symbol	SMURF1
Gene Full Name	SMAD specific E3 ubiquitin protein ligase 1
Background	This gene encodes a ubiquitin ligase that is specific for receptor-regulated SMAD proteins in the bone morphogenetic protein (BMP) pathway. This protein plays a key roll in the regulation of cell motility, cell signalling, and cell polarity. Alternative splicing results in multiple transcript variants encoding different isoforms.[provided by RefSeq, Dec 2010]
Function	E3 ubiquitin-protein ligase that acts as a negative regulator of BMP signaling pathway. Mediates ubiquitination and degradation of SMAD1 and SMAD5, 2 receptor-regulated SMADs specific for the BMP pathway. Promotes ubiquitination and subsequent proteasomal degradation of TRAF family members and RHOA. [UniProt]
Calculated Mw	86 kDa
PTM	Auto-ubiquitinated in presence of NDFIP1 (PubMed:23087404). Ubiquitinated by the SCF(FBXL15) complex at Lys-381 and Lys-383, leading to its degradation by the proteasome. Lys-383 is the primary ubiquitination site. [UniProt]
Cellular Localization	Cytoplasm. Cell membrane; Peripheral membrane protein; Cytoplasmic side. [UniProt]

Images



ARG59465 anti-SMURF1 antibody ICC/IF image

Immunofluorescence: HeLa cells were blocked with 10% goat serum and then stained with ARG59465 anti-SMURF1 antibody (green) at 2 µg/ml dilution, overnight at 4°C. DAPI (blue) for nuclear staining.



ARG59465 anti-SMURF1 antibody IHC-P image

Immunohistochemistry: Paraffin-embedded Human intestinal cancer tissue. Antigen Retrieval: Heat mediation was performed in EDTA buffer (pH 8.0). The tissue section was blocked with 10% goat serum. The tissue section was then stained with ARG59465 anti-SMURF1 antibody at 1 µg/ml dilution, overnight at 4°C.

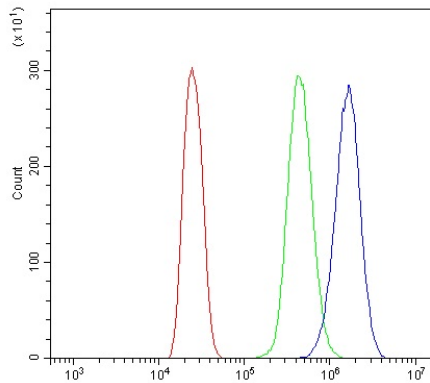
ARG59465 anti-SMURF1 antibody WB image

Western blot: Rat brain and MCF-7 whole cell lysates stained with ARG59465 anti-SMURF1 antibody at 0.5 µg/ml dilution.



ARG59465 anti-SMURF1 antibody FACS image

Flow Cytometry: MCF-7 cells were blocked with 10% normal goat serum and then stained with ARG59465 anti-SMURF1 antibody (blue) at 1 µg/10⁶ cells for 30 min at 20°C, followed by incubation with DyLight®488 labelled secondary antibody. Isotype control antibody (green) was rabbit IgG (1 µg/10⁶ cells) used under the same conditions. Unlabelled sample (red) was also used as a control.



ARG59465 anti-SMURF1 antibody IHC-P image

Immunohistochemistry: Paraffin-embedded Human breast cancer tissue. Antigen Retrieval: Heat mediation was performed in EDTA buffer (pH 8.0). The tissue section was blocked with 10% goat serum. The tissue section was then stained with ARG59465 anti-SMURF1 antibody at 1 µg/ml dilution, overnight at 4°C.

