

## ARG59483 anti-SMYD3 antibody

Package: 100 µl  
Store at: -20°C

### Summary

|                     |  |
|---------------------|--|
| Product Description | Rabbit Polyclonal antibody recognizes SMYD3  |
| Tested Reactivity   | Hu, Ms, Rat  |
| Tested Application  | FACS, ICC/IF, IHC-P, IP, WB  |
| Host                | Rabbit   |
| Clonality           | Polyclonal   |
| Isotype             | IgG  |
| Target Name         | SMYD3  |
| Species             | Human  |
| Immunogen           | Synthetic peptide of Human SMYD3.  |
| Conjugation         | Un-conjugated  |
| Alternate Names     | KMT3E; ZNFN3A1; ZMYND1; bA74P14.1; EC 2.1.1.43; SET and MYND domain-containing protein 3; Histone-lysine N-methyltransferase SMYD3; Zinc finger MYND domain-containing protein 1 |

### Application Instructions

| Application table | Application  | Dilution       |
|-------------------|--|----------------|
|                   | FACS   | 1:30           |
|                   | ICC/IF   | 1:50 - 1:200   |
|                   | IHC-P  | 1:50 - 1:200   |
|                   | IP   | 1:50           |
|                   | WB   | 1:500 - 1:2000 |
|                   |  |                |
| Application Note  | * The dilutions indicate recommended starting dilutions and the optimal dilutions or concentrations should be determined by the scientist. |                |
| Positive Control  | HeLa   |                |
| Observed Size     | ~ 42 kDa   |                |

### Properties

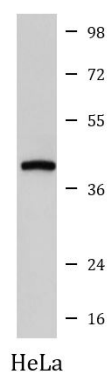
|              |  |
|--------------|--|
| Form         | Liquid   |
| Purification | Affinity purified.   |
| Buffer       | PBS (pH 7.4), 150mM NaCl, 0.02% Sodium azide and 50% Glycerol. |
| Preservative | 0.02% Sodium azide   |
| Stabilizer   | 50% Glycerol   |

|                     |   |
|---------------------|---|
| Storage instruction | For continuous use, store undiluted antibody at 2-8°C for up to a week. For long-term storage, aliquot and store at -20°C. Storage in frost free freezers is not recommended. Avoid repeated freeze/thaw cycles. Suggest spin the vial prior to opening. The antibody solution should be gently mixed before use. |
| Note                | For laboratory research only, not for drug, diagnostic or other use.  |

## Bioinformation

|                       |   |
|-----------------------|---|
| Gene Symbol           | SMYD3   |
| Gene Full Name        | SET and MYND domain containing 3  |
| Background            | This gene encodes a histone methyltransferase which functions in RNA polymerase II complexes by an interaction with a specific RNA helicase. Multiple transcript variants encoding different isoforms have been found for this gene. [provided by RefSeq, Dec 2011]   |
| Function              | Histone methyltransferase. Specifically methylates 'Lys-4' and 'Lys-5' of histone H3, inducing di- and tri-methylation, but not monomethylation. Plays an important role in transcriptional activation as a member of an RNA polymerase complex. Binds DNA containing 5'-CCCTCC-3' or 5'-GAGGGG-3' sequences. [UniProt] |
| Calculated Mw         | 49 kDa  |
| Cellular Localization | Cytoplasm. Nucleus. Note=Mainly cytoplasmic when cells are arrested at G0/G1. Accumulates in the nucleus at S phase and G2/M. [UniProt]   |

## Images



ARG59483 anti-SMYD3 antibody WB image

Western blot: HeLa cell lysate stained with ARG59483 anti-SMYD3 antibody.