

ARG59500 anti-SMPD2 / nSMase antibody

Package: 100 µl
Store at: -20°C

Summary

Product Description	Rabbit Polyclonal antibody recognizes SMPD2 / nSMase
Tested Reactivity	Ms, Rat
Tested Application	WB
Host	Rabbit
Clonality	Polyclonal
Isotype	IgG
Target Name	SMPD2 / nSMase
Species	Human
Immunogen	Synthetic peptide within aa. 150-250 of Human SMPD2 / nSMase (NP_003071.2).
Conjugation	Un-conjugated
Alternate Names	ISC1; EC 3.1.4.12; NSMASE1; Lyso-platelet-activating factor-phospholipase C; nSMase; Lyso-PAF-PLC; Sphingomyelin phosphodiesterase 2; N-SMase; NSMASE; Neutral sphingomyelinase

Application Instructions

Application table	Application	Dilution
	WB	1:500 - 1:2000
Application Note	* The dilutions indicate recommended starting dilutions and the optimal dilutions or concentrations should be determined by the scientist.	
Positive Control	Rat liver	
Observed Size	48 kDa	

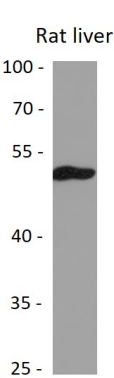
Properties

Form	Liquid
Purification	Affinity purified.
Buffer	PBS (pH 7.3), 0.02% Sodium azide and 50% Glycerol.
Preservative	0.02% Sodium azide
Stabilizer	50% Glycerol
Storage instruction	For continuous use, store undiluted antibody at 2-8°C for up to a week. For long-term storage, aliquot and store at -20°C. Storage in frost free freezers is not recommended. Avoid repeated freeze/thaw cycles. Suggest spin the vial prior to opening. The antibody solution should be gently mixed before use.
Note	For laboratory research only, not for drug, diagnostic or other use.

Bioinformation

Gene Symbol	SMPD2
Gene Full Name	sphingomyelin phosphodiesterase 2, neutral membrane (neutral sphingomyelinase)
Background	This gene encodes a protein which was initially identified as a sphingomyelinase based on sequence similarity between bacterial sphingomyelinases and a yeast protein. Subsequent studies showed that its biological function is less likely to be as a sphingomyelinase and instead as a lysophospholipase. [provided by RefSeq, Oct 2009]
Function	Converts sphingomyelin to ceramide. Hydrolyze 1-acyl-2-lyso-sn-glycero-3-phosphocholine (lyso-PC) and 1-O-alkyl-2-lyso-sn-glycero-3-phosphocholine (lyso-platelet-activating factor). The physiological substrate seems to be Lyso-PAF. [UniProt]
Calculated Mw	48 kDa
Cellular Localization	Membrane; Multi-pass membrane protein. [UniProt]

Images



ARG59500 anti-SMPD2 / nSMase antibody WB image

Western blot: 25 µg of Rat liver lysate stained with ARG59500 anti-SMPD2 / nSMase antibody at 1:3000 dilution.