

ARG59518 anti-SMPD1 / Acid Sphingomyelinase antibody

Package: 100 µl
Store at: -20°C

Summary

| | |
|---------------------|--|
| Product Description | Rabbit Polyclonal antibody recognizes SMPD1 / Acid Sphingomyelinase |
| Tested Reactivity | Hu, Ms, Rat |
| Tested Application | ICC/IF, WB |
| Host | Rabbit |
| Clonality | Polyclonal |
| Isotype | IgG |
| Target Name | SMPD1 / Acid Sphingomyelinase |
| Species | Human |
| Immunogen | Recombinant fusion protein corresponding to aa. 70-340 of Human SMPD1 / Acid Sphingomyelinase (NP_000534.3). |
| Conjugation | Un-conjugated |
| Alternate Names | aSMase; EC 3.1.4.12; NPD; ASMASE; Sphingomyelin phosphodiesterase; Acid sphingomyelinase; ASM |

Application Instructions

| | | |
|-------------------|--|----------------|
| Application table | Application | Dilution |
| | ICC/IF | 1:10 - 1:100 |
| | WB | 1:500 - 1:2000 |
| Application Note | * The dilutions indicate recommended starting dilutions and the optimal dilutions or concentrations should be determined by the scientist. | |
| Positive Control | Mouse heart and Rat liver | |
| Observed Size | 60 kDa | |

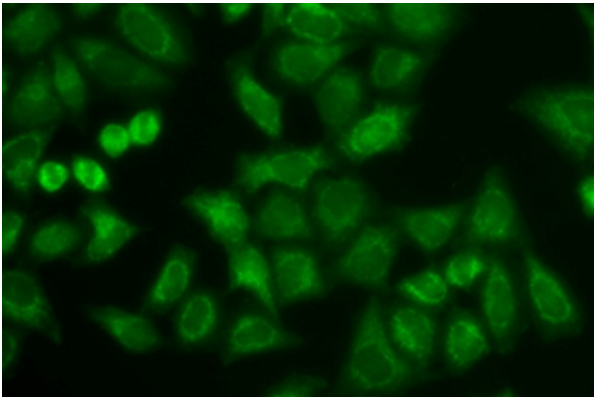
Properties

| | |
|---------------------|---|
| Form | Liquid |
| Purification | Affinity purified. |
| Buffer | PBS (pH 7.3), 0.02% Sodium azide and 50% Glycerol. |
| Preservative | 0.02% Sodium azide |
| Stabilizer | 50% Glycerol |
| Storage instruction | For continuous use, store undiluted antibody at 2-8°C for up to a week. For long-term storage, aliquot and store at -20°C. Storage in frost free freezers is not recommended. Avoid repeated freeze/thaw cycles. Suggest spin the vial prior to opening. The antibody solution should be gently mixed before use. |
| Note | For laboratory research only, not for drug, diagnostic or other use. |

Bioinformation

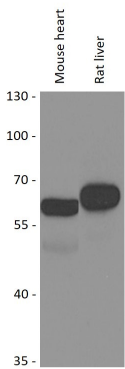
| | |
|-----------------------|--|
| Gene Symbol | SMPD1 |
| Gene Full Name | sphingomyelin phosphodiesterase 1, acid lysosomal |
| Background | The protein encoded by this gene is a lysosomal acid sphingomyelinase that converts sphingomyelin to ceramide. The encoded protein also has phospholipase C activity. Defects in this gene are a cause of Niemann-Pick disease type A (NPA) and Niemann-Pick disease type B (NPB). Multiple transcript variants encoding different isoforms have been identified. [provided by RefSeq, Jul 2010] |
| Function | Converts sphingomyelin to ceramide. Also has phospholipase C activities toward 1,2-diacylglycerolphosphocholine and 1,2-diacylglycerolphosphoglycerol. Isoform 2 and isoform 3 have lost catalytic activity. [UniProt] |
| Calculated Mw | 70 kDa |
| Cellular Localization | Lysosome. Secreted. [UniProt] |

Images



ARG59518 anti-SMPD1 / Acid Sphingomyelinase antibody ICC/IF image

Immunofluorescence: HeLa cells stained with ARG59518 anti-SMPD1 / Acid Sphingomyelinase antibody.



ARG59518 anti-SMPD1 / Acid Sphingomyelinase antibody WB image

Western blot: 25 µg of Mouse heart and Rat liver lysates stained with ARG59518 anti-SMPD1 / Acid Sphingomyelinase antibody at 1:1000 dilution.