

ARG59526 anti-SMPD1 / Acid Sphingomyelinase antibody

Package: 100 µl
Store at: -20°C

Summary

Product Description	Rabbit Polyclonal antibody recognizes SMPD1 / Acid Sphingomyelinase
Tested Reactivity	Hu, Ms, Rat
Tested Application	ICC/IF, WB
Host	Rabbit
Clonality	Polyclonal
Isotype	IgG
Target Name	SMPD1 / Acid Sphingomyelinase
Species	Human
Immunogen	Recombinant protein of Human SMPD1 / Acid Sphingomyelinase.
Conjugation	Un-conjugated
Alternate Names	aSMase; EC 3.1.4.12; NPD; ASMASE; Sphingomyelin phosphodiesterase; Acid sphingomyelinase; ASM

Application Instructions

Application table	Application	Dilution
	ICC/IF	1:50 - 1:200
	WB	1:500 - 1:2000
Application Note	* The dilutions indicate recommended starting dilutions and the optimal dilutions or concentrations should be determined by the scientist.	
Positive Control	THP-1 + PMA	
Observed Size	60 kDa	

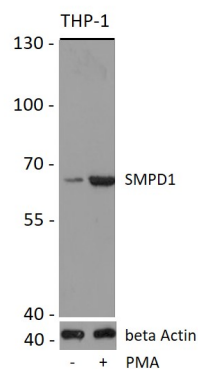
Properties

Form	Liquid
Purification	Affinity purified.
Buffer	PBS (pH 7.3), 0.02% Sodium azide and 50% Glycerol.
Preservative	0.02% Sodium azide
Stabilizer	50% Glycerol
Storage instruction	For continuous use, store undiluted antibody at 2-8°C for up to a week. For long-term storage, aliquot and store at -20°C. Storage in frost free freezers is not recommended. Avoid repeated freeze/thaw cycles. Suggest spin the vial prior to opening. The antibody solution should be gently mixed before use.
Note	For laboratory research only, not for drug, diagnostic or other use.

Bioinformation

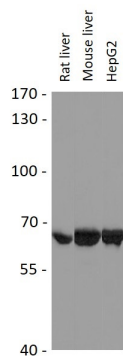
Gene Symbol	SMPD1
Gene Full Name	sphingomyelin phosphodiesterase 1, acid lysosomal
Background	The protein encoded by this gene is a lysosomal acid sphingomyelinase that converts sphingomyelin to ceramide. The encoded protein also has phospholipase C activity. Defects in this gene are a cause of Niemann-Pick disease type A (NPA) and Niemann-Pick disease type B (NPB). Multiple transcript variants encoding different isoforms have been identified. [provided by RefSeq, Jul 2010]
Function	Converts sphingomyelin to ceramide. Also has phospholipase C activities toward 1,2-diacylglycerolphosphocholine and 1,2-diacylglycerolphosphoglycerol. Isoform 2 and isoform 3 have lost catalytic activity. [UniProt]
Calculated Mw	70 kDa
Cellular Localization	Lysosome. Secreted. [UniProt]

Images



ARG59526 anti-SMPD1 / Acid Sphingomyelinase antibody WB image

Western blot: THP-1 cells were untreated or treated by PMA (80 nM) for overnight. 25 µg of cell lysates stained with ARG59526 anti-SMPD1 / Acid Sphingomyelinase antibody at 1:1000 dilution.



ARG59526 anti-SMPD1 / Acid Sphingomyelinase antibody WB image

Western blot: 25 µg of Rat liver, Mouse liver and HepG2 cell lysates stained with ARG59526 anti-SMPD1 / Acid Sphingomyelinase antibody at 1:1000 dilution.