

ARG59544 anti-IL38 antibody

Package: 50 µg
Store at: -20°C

Summary

Product Description	Rabbit Polyclonal antibody recognizes IL38
Tested Reactivity	Hu
Predict Reactivity	Ms, Rat
Tested Application	IHC-P
Host	Rabbit
Clonality	Polyclonal
Isotype	IgG
Target Name	IL38
Species	Human
Immunogen	Recombinant protein corresponding to M1-W152 of Human IL38.
Conjugation	Un-conjugated
Alternate Names	IL1F10; Interleukin 1 Family Member 10; IL-1HY2; IL1-Theta; IL-1F10; FKSG75; Interleukin-1 Receptor Antagonist FKSG75; Interleukin-1 Family Member 10; Family Of Interleukin 1-Theta; Interleukin-1 HY2; Interleukin-38; FIL1 Theta; IL-1 Theta; MGC119832; MGC119833; MGC11983; IL1HY2; IL-38; Interleukin-1 Receptor Antagonist-Like FIL1 Theta; Interleukin 1 Family, Member 10 (Theta); Interleukin 1 Family Member 10 (Theta); IL-1F10 (Canonical Form IL-1F10a); Interleukin-1 Theta; FIL1- Theta; FIL1-Theta; FIL1T; IL38

Application Instructions

Application table	Application	Dilution
	IHC-P	0.5 - 1 µg/ml
Application Note	IHC-P: Antigen Retrieval: Heat mediation was performed in Citrate buffer (pH 6.0) for 20 min. * The dilutions indicate recommended starting dilutions and the optimal dilutions or concentrations should be determined by the scientist.	

Properties

Form	Liquid
Purification	Affinity purification with immunogen.
Buffer	0.9% NaCl, 0.2% Na2HPO4, 0.05% Sodium azide and 5% BSA.
Preservative	0.05% Sodium azide
Stabilizer	5% BSA
Concentration	0.5 mg/ml
Storage instruction	For continuous use, store undiluted antibody at 2-8°C for up to a week. For long-term storage, aliquot and store at -20°C or below. Storage in frost free freezers is not recommended. Avoid repeated

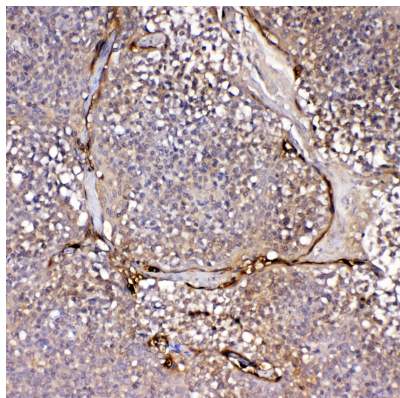
freeze/thaw cycles. Suggest spin the vial prior to opening. The antibody solution should be gently mixed before use.

Note For laboratory research only, not for drug, diagnostic or other use.

Bioinformation

Gene Symbol	IL1F10
Gene Full Name	interleukin 1 family, member 10 (theta)
Background	The protein encoded by this gene is a member of the interleukin 1 cytokine family. This gene and eight other interleukin 1 family genes form a cytokine gene cluster on chromosome 2. This cytokine is thought to participate in a network of interleukin 1 family members to regulate adapted and innate immune responses. Two alternatively spliced transcript variants encoding the same protein have been reported. [provided by RefSeq, Jul 2008]
Function	Cytokine with immunomodulatory activity. Alone, does not induce cytokine production, but reduces IL22 and IL17A production by T-cells in response to heat-killed <i>Candida albicans</i> . Reduces IL36G-induced production of IL8 by peripheral blood mononuclear cells. Increases IL6 production by dendritic cells stimulated by bacterial lipopolysaccharides (LPS). Ligand for IL-36R/IL1RL2. [UniProt]
Calculated Mw	17 kDa
Cellular Localization	Secreted. [UniProt]

Images



ARG59544 anti-IL38 antibody IHC-P image

Immunohistochemistry: Paraffin-embedded Human tonsil tissue. Antigen Retrieval: Heat mediation was performed in Citrate buffer (pH 6.0, epitope retrieval solution) for 20 min. The tissue section was blocked with 10% goat serum. The tissue section was then stained with ARG59544 anti-IL38 antibody at 1 µg/ml, overnight at 4°C.