

ARG59588 anti-BTNL2 antibody

Package: 100 µl
Store at: -20°C

Summary

Product Description	Rabbit Polyclonal antibody recognizes BTNL2
Tested Reactivity	Hu, Ms, Rat
Tested Application	IHC-P, WB
Host	Rabbit
Clonality	Polyclonal
Isotype	IgG
Target Name	BTNL2
Species	Human
Immunogen	Recombinant fusion protein corresponding to aa. 246-455 of Human BTNL2 (NP_062548.1).
Conjugation	Un-conjugated
Alternate Names	BTL-II; Butyrophilin-like protein 2; HSBLMHC1; BTN7; SS2

Application Instructions

Application table	Application	Dilution
	IHC-P	1:50 - 1:200
	WB	1:500 - 1:2000
Application Note	* The dilutions indicate recommended starting dilutions and the optimal dilutions or concentrations should be determined by the scientist.	
Positive Control	Mouse liver and HepG2	
Observed Size	60 kDa	

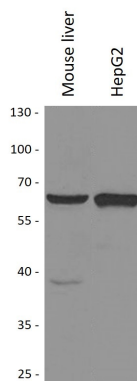
Properties

Form	Liquid
Purification	Affinity purified.
Buffer	PBS (pH 7.3), 0.02% Sodium azide and 50% Glycerol.
Preservative	0.02% Sodium azide
Stabilizer	50% Glycerol
Storage instruction	For continuous use, store undiluted antibody at 2-8°C for up to a week. For long-term storage, aliquot and store at -20°C. Storage in frost free freezers is not recommended. Avoid repeated freeze/thaw cycles. Suggest spin the vial prior to opening. The antibody solution should be gently mixed before use.
Note	For laboratory research only, not for drug, diagnostic or other use.

Bioinformation

Gene Symbol	BTNL2
Gene Full Name	butyrophilin-like 2
Function	Negative regulator of T-cell proliferation. [UniProt]
Calculated Mw	50 kDa
Cellular Localization	Membrane; Single-pass type II membrane protein. Note=Isoform 2 is present in the nuclear, vesicle and plasma membranes, isoform 3 is found in cytoplasmic vesicle structures and is not membrane bound. [UniProt]

Images



ARG59588 anti-BTNL2 antibody WB image

Western blot: 25 µg of Mouse liver and HepG2 cell lysates stained with ARG59588 anti-BTNL2 antibody at 1:1000 dilution.