

## ARG59601 anti-Guanylate Cyclase alpha antibody

Package: 100 µl  
Store at: -20°C

### Summary

Product Description	Rabbit Polyclonal antibody recognizes Guanylate Cyclase alpha
Tested Reactivity	Hu, Ms, Rat
Tested Application	ICC/IF, WB
Host	Rabbit
Clonality	Polyclonal
Isotype	IgG
Target Name	Guanylate Cyclase alpha
Species	Human
Immunogen	Recombinant fusion protein corresponding to aa. 1-120 of Human Guanylate Cyclase alpha (NP_000847.2).
Conjugation	Un-conjugated
Alternate Names	Soluble guanylate cyclase large subunit; GC-SA3; MYMY6; GUC1A3; Guanylate cyclase soluble subunit alpha-3; GUCY1A1; GUCA3; GCS-alpha-1; GUCSA3; EC 4.6.1.2; GCS-alpha-3

### Application Instructions

Application table	Application	Dilution
	ICC/IF	1:50 - 1:200
	WB	1:1000 - 1:3000
Application Note	* The dilutions indicate recommended starting dilutions and the optimal dilutions or concentrations should be determined by the scientist.	
Positive Control	Rat kidney, Mouse brain and A549	
Observed Size	77 kDa	

### Properties

Form	Liquid
Purification	Affinity purified.
Buffer	PBS (pH 7.3), 0.02% Sodium azide and 50% Glycerol.
Preservative	0.02% Sodium azide
Stabilizer	50% Glycerol
Storage instruction	For continuous use, store undiluted antibody at 2-8°C for up to a week. For long-term storage, aliquot and store at -20°C. Storage in frost free freezers is not recommended. Avoid repeated freeze/thaw cycles. Suggest spin the vial prior to opening. The antibody solution should be gently mixed before use.

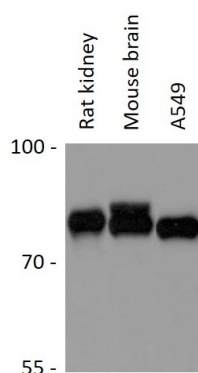
**Note**

For laboratory research only, not for drug, diagnostic or other use.

## Bioinformation

Gene Symbol	GUCY1A3
Gene Full Name	guanylate cyclase 1, soluble, alpha 3
Background	Soluble guanylate cyclases are heterodimeric proteins that catalyze the conversion of GTP to 3',5'-cyclic GMP and pyrophosphate. The protein encoded by this gene is an alpha subunit of this complex and it interacts with a beta subunit to form the guanylate cyclase enzyme, which is activated by nitric oxide. Several transcript variants encoding a few different isoforms have been found for this gene. [provided by RefSeq, Jan 2012]
Calculated Mw	77 kDa
Cellular Localization	Cytoplasm. [UniProt]

## Images



ARG59601 anti-Guanylate Cyclase alpha antibody WB image

Western blot: 25 µg of Rat kidney, Mouse brain and A549 cell lysates stained with ARG59601 anti-Guanylate Cyclase alpha antibody at 1:3000 dilution.