

## ARG59602 anti-TFIIE beta antibody

Package: 100 µl  
Store at: -20°C

### Summary

Product Description	Rabbit Polyclonal antibody recognizes TFIIE beta
Tested Reactivity	Hu, Ms, Rat
Tested Application	WB
Host	Rabbit
Clonality	Polyclonal
Isotype	IgG
Target Name	TFIIE beta
Species	Human
Immunogen	Recombinant fusion protein corresponding to aa. 1-291 of Human TFIIE beta (NP_002086.1).
Conjugation	Un-conjugated
Alternate Names	General transcription factor IIE subunit 2; TF2E2; TFIIE-beta; FE; Transcription initiation factor IIE subunit beta; TFIIE-B

### Application Instructions

Application table	Application	Dilution
	WB	1:200 - 1:2000
Application Note	* The dilutions indicate recommended starting dilutions and the optimal dilutions or concentrations should be determined by the scientist.	
Positive Control	NIH/3T3 and Jurkat	
Observed Size	37 kDa	

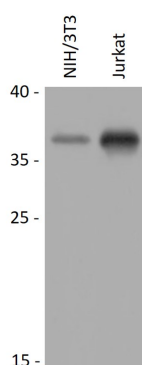
### Properties

Form	Liquid
Purification	Affinity purified.
Buffer	PBS (pH 7.3), 0.02% Sodium azide and 50% Glycerol.
Preservative	0.02% Sodium azide
Stabilizer	50% Glycerol
Storage instruction	For continuous use, store undiluted antibody at 2-8°C for up to a week. For long-term storage, aliquot and store at -20°C. Storage in frost free freezers is not recommended. Avoid repeated freeze/thaw cycles. Suggest spin the vial prior to opening. The antibody solution should be gently mixed before use.
Note	For laboratory research only, not for drug, diagnostic or other use.

## Bioinformation

Gene Symbol	GTF2E2
Gene Full Name	general transcription factor IIE, polypeptide 2, beta 34kDa
Function	Recruits TFIID to the initiation complex and stimulates the RNA polymerase II C-terminal domain kinase and DNA-dependent ATPase activities of TFIID. Both TFIID and TFIIE are required for promoter clearance by RNA polymerase. [UniProt]
Calculated Mw	33 kDa
Cellular Localization	Nucleus. [UniProt]

## Images



ARG59602 anti-TFIIE beta antibody WB image

Western blot: 25 µg of NIH/3T3 and Jurkat cell lysates stained with ARG59602 anti-TFIIE beta antibody at 1:1000 dilution.