

ARG59606 anti-GUCY2F antibody

Package: 100 µl
Store at: -20°C

Summary

Product Description	Rabbit Polyclonal antibody recognizes GUCY2F
Tested Reactivity	Ms, Rat
Tested Application	WB
Host	Rabbit
Clonality	Polyclonal
Isotype	IgG
Target Name	GUCY2F
Species	Human
Immunogen	Recombinant fusion protein corresponding to aa. 250-460 of Human GUCY2F (NP_001513.2).
Conjugation	Un-conjugated
Alternate Names	ROS-GC2; CYGF; Rod outer segment membrane guanylate cyclase 2; Guanylate cyclase F; Retinal guanylyl cyclase 2; GC-F; GUC2F; GUC2DL; EC 4.6.1.2; RETGC-2; Guanylate cyclase 2F, retinal

Application Instructions

Application table	Application	Dilution
	WB	1:500 - 1:2000
Application Note	* The dilutions indicate recommended starting dilutions and the optimal dilutions or concentrations should be determined by the scientist.	
Positive Control	Mouse eye	
Observed Size	125 kDa	

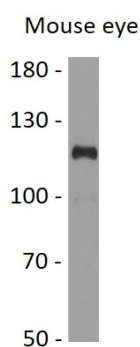
Properties

Form	Liquid
Purification	Affinity purified.
Buffer	PBS (pH 7.3), 0.02% Sodium azide and 50% Glycerol.
Preservative	0.02% Sodium azide
Stabilizer	50% Glycerol
Storage instruction	For continuous use, store undiluted antibody at 2-8°C for up to a week. For long-term storage, aliquot and store at -20°C. Storage in frost free freezers is not recommended. Avoid repeated freeze/thaw cycles. Suggest spin the vial prior to opening. The antibody solution should be gently mixed before use.
Note	For laboratory research only, not for drug, diagnostic or other use.

Bioinformation

Gene Symbol	GUCY2F
Gene Full Name	guanylate cyclase 2F, retinal
Background	The protein encoded by this gene is a guanylyl cyclase found predominantly in photoreceptors in the retina. The encoded protein is thought to be involved in resynthesis of cGMP after light activation of the visual signal transduction cascade, allowing a return to the dark state. This protein is a single-pass type I membrane protein. Defects in this gene may be a cause of X-linked retinitis pigmentosa. [provided by RefSeq, Dec 2008]
Function	Probably plays a specific functional role in the rods and/or cones of photoreceptors. It may be the enzyme involved in the resynthesis of cGMP required for recovery of the dark state after phototransduction. [UniProt]
Calculated Mw	125 kDa
PTM	There are 9 conserved cysteine residues in sensory guanylate cyclases, 6 in the extracellular domain, which may be involved in intra- or interchain disulfide bonds. [UniProt]
Cellular Localization	Membrane; Single-pass type I membrane protein. [UniProt]

Images



ARG59606 anti-GUCY2F antibody WB image

Western blot: 25 µg of Mouse eye lysate stained with ARG59606 anti-GUCY2F antibody at 1:1000 dilution.