

ARG59608 anti-Guanylyl Cyclase beta antibody

Package: 100 µl
Store at: -20°C

Summary

Product Description	Rabbit Polyclonal antibody recognizes Guanylyl Cyclase beta
Tested Reactivity	Hu, Ms, Rat
Tested Application	WB
Host	Rabbit
Clonality	Polyclonal
Isotype	IgG
Target Name	Guanylyl Cyclase beta
Species	Human
Immunogen	Recombinant fusion protein corresponding to aa. 1-250 of Human Guanylyl Cyclase beta (NP_000848.1).
Conjugation	Un-conjugated
Alternate Names	GC-S-beta-1; GUC1B3; GUCSB3; Soluble guanylate cyclase small subunit; GCS-beta-1; GUCY1B1; GCS-beta-3; GUCB3; EC 4.6.1.2; Guanylate cyclase soluble subunit beta-3; GC-SB3; Guanylate cyclase soluble subunit beta-1

Application Instructions

Application table	Application	Dilution
	WB	1:200 - 1:2000
Application Note	* The dilutions indicate recommended starting dilutions and the optimal dilutions or concentrations should be determined by the scientist.	
Positive Control	Rat lung and Mouse brain	
Observed Size	70 kDa	

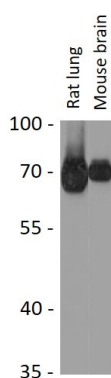
Properties

Form	Liquid
Purification	Affinity purified.
Buffer	PBS (pH 7.3), 0.02% Sodium azide and 50% Glycerol.
Preservative	0.02% Sodium azide
Stabilizer	50% Glycerol
Storage instruction	For continuous use, store undiluted antibody at 2-8°C for up to a week. For long-term storage, aliquot and store at -20°C. Storage in frost free freezers is not recommended. Avoid repeated freeze/thaw cycles. Suggest spin the vial prior to opening. The antibody solution should be gently mixed before use.
Note	For laboratory research only, not for drug, diagnostic or other use.

Bioinformation

Gene Symbol	GUCY1B3
Gene Full Name	guanylate cyclase 1, soluble, beta 3
Background	This gene encodes the beta subunit of the soluble guanylate cyclase (sGC), which catalyzes the conversion of GTP (guanosine triphosphate) to cGMP (cyclic guanosine monophosphate). The encoded protein contains an HNOX domain, which serves as a receptor for ligands such as nitric oxide, oxygen and nitrovasodilator drugs. Alternative splicing results in multiple transcript variants. [provided by RefSeq, May 2014]
Calculated Mw	71 kDa
Cellular Localization	Cytoplasm. [UniProt]

Images



ARG59608 anti-Guanylyl Cyclase beta antibody WB image

Western blot: 25 µg of Rat lung and Mouse brain lysates stained with ARG59608 anti-Guanylyl Cyclase beta antibody at 1:1000 dilution.