

## ARG59627 anti-VKORC1L1 antibody

Package: 100 µl  
Store at: -20°C

### Summary

Product Description	Rabbit Polyclonal antibody recognizes VKORC1L1
Tested Reactivity	Hu, Ms, Rat
Tested Application	WB
Host	Rabbit
Clonality	Polyclonal
Isotype	IgG
Target Name	VKORC1L1
Species	Human
Immunogen	KLH-conjugated synthetic peptide corresponding to aa. 19-47 of Human VKORC1L1.
Conjugation	Un-conjugated
Alternate Names	EC 1.17.4.4; VKORC1-like protein 1; Vitamin K epoxide reductase complex subunit 1-like protein 1

### Application Instructions

Application table	Application	Dilution
	WB	1:1000
Application Note	* The dilutions indicate recommended starting dilutions and the optimal dilutions or concentrations should be determined by the scientist.	
Positive Control	Mouse brain	

### Properties

Form	Liquid
Purification	Purification with Protein A and immunogen peptide.
Buffer	PBS and 0.09% (W/V) Sodium azide.
Preservative	0.09% (W/V) Sodium azide
Storage instruction	For continuous use, store undiluted antibody at 2-8°C for up to a week. For long-term storage, aliquot and store at -20°C or below. Storage in frost free freezers is not recommended. Avoid repeated freeze/thaw cycles. Suggest spin the vial prior to opening. The antibody solution should be gently mixed before use.
Note	For laboratory research only, not for drug, diagnostic or other use.

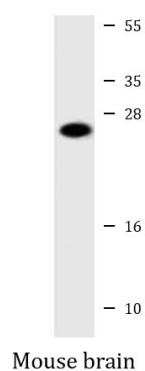
### Bioinformation

Gene Symbol	VKORC1L1
-------------	----------

Gene Full Name	vitamin K epoxide reductase complex, subunit 1-like 1
Function	Involved in vitamin K metabolism. Can reduce inactive vitamin K 2,3-epoxide to active vitamin K (in vitro), and may contribute to vitamin K-mediated protection against oxidative stress. Plays a role in vitamin K-dependent gamma-carboxylation of Glu residues in target proteins. [UniProt]
Calculated Mw	20 kDa
Cellular Localization	Endoplasmic reticulum membrane; Multi-pass membrane protein. [UniProt]

## Images

---



ARG59627 anti-VKORC1L1 antibody WB image

Western blot: 20 µg of Mouse brain lysate stained with ARG59627 anti-VKORC1L1 antibody at 1:1000 - 1:2000 dilution.