

ARG59665 anti-CD194 / CCR4 antibody

Package: 50 µg
Store at: -20°C

Summary

Product Description	Rabbit Polyclonal antibody recognizes CD194 / CCR4
Tested Reactivity	Ms, Rat
Predict Reactivity	Bov
Tested Application	WB
Host	Rabbit
Clonality	Polyclonal
Isotype	IgG
Target Name	CD194 / CCR4
Species	Mouse
Immunogen	Synthetic peptide corresponding to aa. 346-360 of Mouse CCR4. (SYTQSTVDHDFRDAL)
Conjugation	Un-conjugated
Alternate Names	CD194; ChemR13; K5-5; C-C chemokine receptor type 4; CCR-4; HGCN:14099; CKR4; CD antigen CD194; CC-CKR-4; CCR4; C-C CKR-4; CMKBR4

Application Instructions

Application table	Application	Dilution
	WB	0.1 - 0.5 µg/ml
Application Note	* The dilutions indicate recommended starting dilutions and the optimal dilutions or concentrations should be determined by the scientist.	

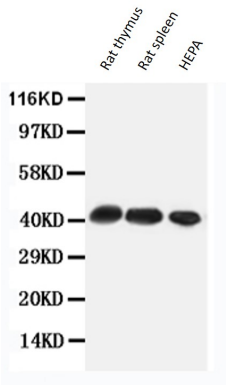
Properties

Form	Liquid
Purification	Affinity purification with immunogen.
Buffer	0.9% NaCl, 0.2% Na ₂ HPO ₄ , 0.05% Thimerosal, 0.05% Sodium azide and 5% BSA.
Preservative	0.05% Thimerosal and 0.05% Sodium azide
Stabilizer	5% BSA
Concentration	0.5 mg/ml
Storage instruction	For continuous use, store undiluted antibody at 2-8°C for up to a week. For long-term storage, aliquot and store at -20°C or below. Storage in frost free freezers is not recommended. Avoid repeated freeze/thaw cycles. Suggest spin the vial prior to opening. The antibody solution should be gently mixed before use.
Note	For laboratory research only, not for drug, diagnostic or other use.

Bioinformation

Gene Symbol	CCR4
Gene Full Name	chemokine (C-C motif) receptor 4
Background	The protein encoded by this gene belongs to the G-protein-coupled receptor family . It is a receptor for the CC chemokine - MIP-1, RANTES, TARC and MCP-1. Chemokines are a group of small polypeptide, structurally related molecules that regulate cell trafficking of various types of leukocytes. The chemokines also play fundamental roles in the development, homeostasis, and function of the immune system, and they have effects on cells of the central nervous system as well as on endothelial cells involved in angiogenesis or angiostasis. [provided by RefSeq, Jul 2008]
Function	High affinity receptor for the C-C type chemokines CCL17/TARC, CCL22/MDC and CKLF isoform 1/CKLF1. The activity of this receptor is mediated by G(i) proteins which activate a phosphatidylinositol-calcium second messenger system. Can function as a chemoattractant homing receptor on circulating memory lymphocytes and as a coreceptor for some primary HIV-2 isolates. In the CNS, could mediate hippocampal-neuron survival. [UniProt]
Calculated Mw	41 kDa
PTM	In natural killer cells, CCL22 binding induces phosphorylation on yet undefined Ser/Thr residues, most probably by beta-adrenergic receptor kinases 1 and 2. [UniProt]
Cellular Localization	Cell membrane; Multi-pass membrane protein. [UniProt]

Images



ARG59665 anti-CD194 / CCR4 antibody WB image

Western blot: 50 µg of Rat thymus, 50 µg of Rat spleen and 40 µg of HEPA whole cell lysates stained with ARG59665 anti-CD194 / CCR4 antibody at 0.5 µg/ml dilution.