

ARG59680 anti-Cystatin B / Stefin B antibody

Package: 50 µg
Store at: -20°C

Summary

Product Description	Rabbit Polyclonal antibody recognizes Cystatin B / Stefin B
Tested Reactivity	Hu
Tested Application	FACS, ICC/IF, IHC-P, WB
Host	Rabbit
Clonality	Polyclonal
Isotype	IgG
Target Name	Cystatin B / Stefin B
Species	Human
Immunogen	Recombinant protein corresponding to M1-F98 Human Stefin B.
Conjugation	Un-conjugated
Alternate Names	Liver thiol proteinase inhibitor; EPM1; CPI-B; EPM1A; Cystatin-B; Stefin-B; PME; CST6; ULD; STFB

Application Instructions

Application table	Application	Dilution
	FACS	1:150 - 1:500
	ICC/IF	1:100
	IHC-P	0.5 - 1 µg/ml
	WB	0.1 - 0.5 µg/ml
Application Note	IHC-P: Antigen Retrieval: By heat mediation. * The dilutions indicate recommended starting dilutions and the optimal dilutions or concentrations should be determined by the scientist.	

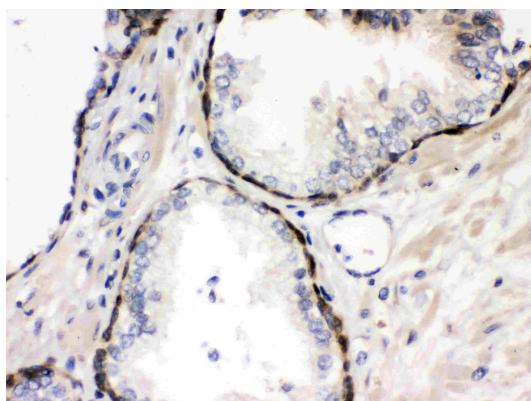
Properties

Form	Liquid
Purification	Affinity purification with immunogen.
Buffer	0.9% NaCl, 0.2% Na2HPO4, 0.05% Sodium azide and 5% BSA.
Preservative	0.05% Sodium azide
Stabilizer	5% BSA
Concentration	0.5 mg/ml
Storage instruction	For continuous use, store undiluted antibody at 2-8°C for up to a week. For long-term storage, aliquot and store at -20°C or below. Storage in frost free freezers is not recommended. Avoid repeated freeze/thaw cycles. Suggest spin the vial prior to opening. The antibody solution should be gently mixed before use.

Bioinformation

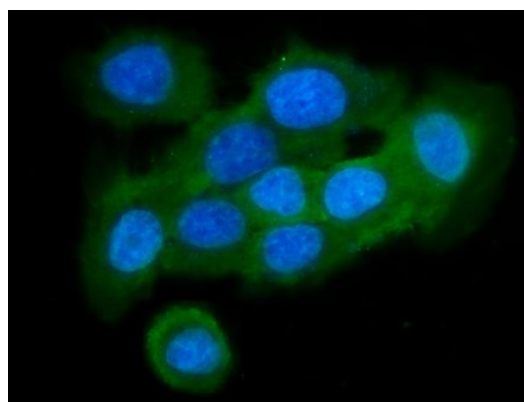
Gene Symbol	CSTB
Gene Full Name	cystatin B (stefin B)
Background	The cystatin superfamily encompasses proteins that contain multiple cystatin-like sequences. Some of the members are active cysteine protease inhibitors, while others have lost or perhaps never acquired this inhibitory activity. There are three inhibitory families in the superfamily, including the type 1 cystatins (stefins), type 2 cystatins and kininogens. This gene encodes a stefin that functions as an intracellular thiol protease inhibitor. The protein is able to form a dimer stabilized by noncovalent forces, inhibiting papain and cathepsins L, H and B. The protein is thought to play a role in protecting against the proteases leaking from lysosomes. Evidence indicates that mutations in this gene are responsible for the primary defects in patients with progressive myoclonic epilepsy (EPM1). [provided by RefSeq, Jul 2008]
Function	This is an intracellular thiol proteinase inhibitor. Tightly binding reversible inhibitor of cathepsins L, H and B. [UniProt]
Calculated Mw	11 kDa
Cellular Localization	Cytoplasm. Nucleus. [UniProt]

Images



ARG59680 anti-Cystatin B / Stefin B antibody IHC-P image

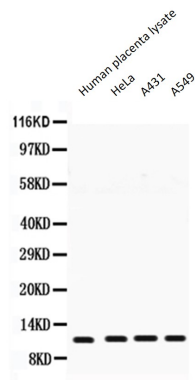
Immunohistochemistry: Paraffin-embedded Human prostatic cancer stained with ARG59680 anti-Cystatin B / Stefin B antibody.



ARG59680 anti-Cystatin B / Stefin B antibody ICC/IF image

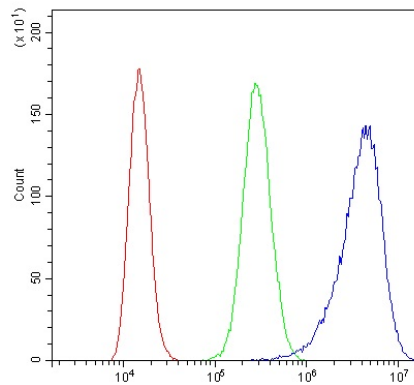
Immunofluorescence: A431 cells stained with ARG59680 anti-Cystatin B / Stefin B antibody at 1:100 dilution.

ARG59680 anti-Cystatin B / Stefin B antibody WB image



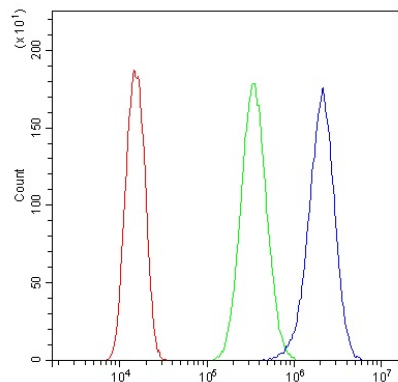
Western blot: 50 μ g of Human placenta lysate, 40 μ g of HeLa whole cell lysate, 40 μ g of A431 whole cell lysate and 40 μ g of A549 whole cell lysate stained with ARG59680 anti-Cystatin B / Stefin B antibody at 0.5 μ g/ml dilution.

ARG59680 anti-Cystatin B / Stefin B antibody FACS image



Flow Cytometry: A431 cells were blocked with 10% normal goat serum and then stained with ARG59680 anti-Cystatin B / Stefin B antibody (blue) at 1 μ g/ 10^6 cells for 30 min at 20°C, followed by incubation with DyLight[®]488 labelled secondary antibody. Isotype control antibody (green) was rabbit IgG (1 μ g/ 10^6 cells) used under the same conditions. Unlabelled sample (red) was also used as a control.

ARG59680 anti-Cystatin B / Stefin B antibody FACS image



Flow Cytometry: U2OS cells were blocked with 10% normal goat serum and then stained with ARG59680 anti-Cystatin B / Stefin B antibody (blue) at 1 μ g/ 10^6 cells for 30 min at 20°C, followed by incubation with DyLight[®]488 labelled secondary antibody. Isotype control antibody (green) was rabbit IgG (1 μ g/ 10^6 cells) used under the same conditions. Unlabelled sample (red) was also used as a control.