

ARG59694 anti-GP2 antibody [GP2/1712]

Package: 50 µg
Store at: -20°C

Summary

Product Description	Mouse Monoclonal antibody [GP2/1712] recognizes GP2
Tested Reactivity	Hu
Tested Application	ICC/IF, IHC-P
Host	Mouse
Clonality	Monoclonal
Clone	GP2/1712
Isotype	IgG2b, lambda
Target Name	GP2
Species	Human
Immunogen	Partial recombinant protein corresponding to aa. 35-179 of Human GP2.
Conjugation	Un-conjugated
Alternate Names	ZAP75; Pancreatic secretory granule membrane major glycoprotein GP2; Pancreatic zymogen granule membrane protein GP-2

Application Instructions

Application table	Application	Dilution
	ICC/IF	0.5 - 1 µg/ml
	IHC-P	1 - 2 µg/ml
Application Note	IHC-P: Antigen Retrieval: Boil tissue section in 10 mM Tris with 1 mM EDTA (pH 9.0), for 10-20 min. * The dilutions indicate recommended starting dilutions and the optimal dilutions or concentrations should be determined by the scientist.	

Properties

Form	Liquid
Purification	Purification with Protein G.
Buffer	PBS, 0.05% Sodium azide and 0.1 mg/ml BSA.
Preservative	0.05% Sodium azide
Stabilizer	0.1 mg/ml BSA
Concentration	0.2 mg/ml
Storage instruction	For continuous use, store undiluted antibody at 2-8°C for up to a week. For long-term storage, aliquot and store at -20°C or below. Storage in frost free freezers is not recommended. Avoid repeated freeze/thaw cycles. Suggest spin the vial prior to opening. The antibody solution should be gently mixed before use.

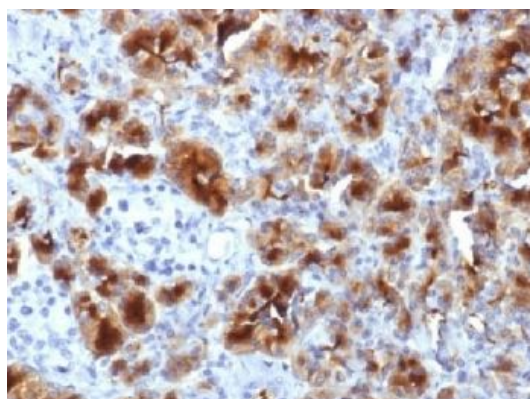
Note

For laboratory research only, not for drug, diagnostic or other use.

Bioinformation

Gene Symbol	GP2
Gene Full Name	glycoprotein 2 (zymogen granule membrane)
Background	This gene encodes an integral membrane protein that is secreted from intracellular zymogen granules and associates with the plasma membrane via glycosylphosphatidylinositol (GPI) linkage. The encoded protein binds pathogens such as enterobacteria, thereby playing an important role in the innate immune response. The C-terminus of this protein is related to the C-terminus of the protein encoded by the neighboring gene, uromodulin (UMOD). Alternative splicing results in multiple transcript variants. [provided by RefSeq, Jan 2015]
Calculated Mw	59 kDa
Cellular Localization	Cell membrane; Lipid-anchor, GPI-anchor. Secreted. Note=Secreted after cleavage in the pancreatic juice. [UniProt]

Images



ARG59694 anti-GP2 antibody [GP2/1712] IHC-P image

Immunohistochemistry: Formalin-fixed and paraffin-embedded Human pancreas stained with ARG59694 anti-GP2 antibody [GP2/1712]. Antigen Retrieval: Boil tissue section in 10 mM Tris with 1 mM EDTA (pH 9.0), for 10-20 min.