

ARG59711 anti-SIM2 antibody

Package: 100 µl
Store at: -20°C

Summary

Product Description	Rabbit Polyclonal antibody recognizes SIM2
Tested Reactivity	Hu, Ms, Rat
Tested Application	WB
Host	Rabbit
Clonality	Polyclonal
Isotype	IgG
Target Name	SIM2
Species	Human
Immunogen	Recombinant fusion protein corresponding to aa. 342-525 of Human SIM2 (NP_033664.2).
Conjugation	Un-conjugated
Alternate Names	bHLHe15; Single-minded homolog 2; Class E basic helix-loop-helix protein 15; HMC13F06; HMC29C01; SIM

Application Instructions

Application table	<table> <tr> <th>Application</th><th>Dilution</th></tr> <tr> <td>WB</td><td>1:500 - 1:2000</td></tr> </table>	Application	Dilution	WB	1:500 - 1:2000
Application	Dilution				
WB	1:500 - 1:2000				
Application Note	* The dilutions indicate recommended starting dilutions and the optimal dilutions or concentrations should be determined by the scientist.				
Positive Control	U-251MG				
Observed Size	56 kDa				

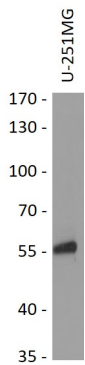
Properties

Form	Liquid
Purification	Affinity purified.
Buffer	PBS (pH 7.3), 0.02% Sodium azide and 50% Glycerol.
Preservative	0.02% Sodium azide
Stabilizer	50% Glycerol
Storage instruction	For continuous use, store undiluted antibody at 2-8°C for up to a week. For long-term storage, aliquot and store at -20°C. Storage in frost free freezers is not recommended. Avoid repeated freeze/thaw cycles. Suggest spin the vial prior to opening. The antibody solution should be gently mixed before use.
Note	For laboratory research only, not for drug, diagnostic or other use.

Bioinformation

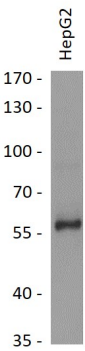
Gene Symbol	SIM2
Gene Full Name	single-minded family bHLH transcription factor 2
Background	This gene represents a homolog of the Drosophila single-minded (sim) gene, which encodes a transcription factor that is a master regulator of neurogenesis. The encoded protein is ubiquitinated by RING-IBR-RING-type E3 ubiquitin ligases, including the parkin RBR E3 ubiquitin protein ligase. This gene maps within the so-called Down syndrome chromosomal region, and is thus thought to contribute to some specific Down syndrome phenotypes. Alternative splicing of this gene results in multiple transcript variants. [provided by RefSeq, Sep 2014]
Function	Transcription factor that may be a master gene of CNS development in cooperation with Arnt. It may have pleiotropic effects in the tissues expressed during development. [UniProt]
Calculated Mw	Isoform SIM2: 73 kDa Isoform SIM2S: 64 kDa
Cellular Localization	Nucleus. [UniProt]

Images



ARG59711 anti-SIM2 antibody WB image

Western blot: 25 µg of U-251MG cell lysate stained with ARG59711 anti-SIM2 antibody at 1:1000 dilution.



ARG59711 anti-SIM2 antibody WB image

Western blot: 25 µg of HepG2 cell lysate stained with ARG59711 anti-SIM2 antibody at 1:1000 dilution.