

## ARG59724 anti-ID1 antibody

Package: 100 µl  
Store at: -20°C

### Summary

Product Description	Rabbit Polyclonal antibody recognizes ID1
Tested Reactivity	Hu, Rat
Predict Reactivity	Ms
Tested Application	FACS, WB
Host	Rabbit
Clonality	Polyclonal
Isotype	IgG
Target Name	ID1
Species	Human
Immunogen	KLH-conjugated synthetic peptide corresponding to aa. 66-93 of Human ID1.
Conjugation	Un-conjugated
Alternate Names	DNA-binding protein inhibitor ID-1; Class B basic helix-loop-helix protein 24; Inhibitor of DNA binding 1; ID; bHLHb24; Inhibitor of differentiation 1

### Application Instructions

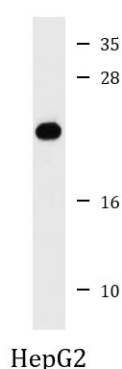
Application table	Application	Dilution
	FACS	1:10 - 1:50
	WB	1:1000
Application Note	* The dilutions indicate recommended starting dilutions and the optimal dilutions or concentrations should be determined by the scientist.	
Positive Control	HepG2	

### Properties

Form	Liquid
Purification	Purification with Protein A and immunogen peptide.
Buffer	PBS and 0.09% (W/V) Sodium azide.
Preservative	0.09% (W/V) Sodium azide.
Storage instruction	For continuous use, store undiluted antibody at 2-8°C for up to a week. For long-term storage, aliquot and store at -20°C or below. Storage in frost free freezers is not recommended. Avoid repeated freeze/thaw cycles. Suggest spin the vial prior to opening. The antibody solution should be gently mixed before use.
Note	For laboratory research only, not for drug, diagnostic or other use.

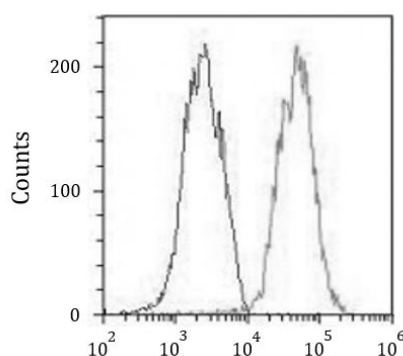
Gene Symbol	ID1
Gene Full Name	inhibitor of DNA binding 1, dominant negative helix-loop-helix protein
Background	The protein encoded by this gene is a helix-loop-helix (HLH) protein that can form heterodimers with members of the basic HLH family of transcription factors. The encoded protein has no DNA binding activity and therefore can inhibit the DNA binding and transcriptional activation ability of basic HLH proteins with which it interacts. This protein may play a role in cell growth, senescence, and differentiation. Two transcript variants encoding different isoforms have been found for this gene. [provided by RefSeq, Jul 2008]
Function	Transcriptional regulator (lacking a basic DNA binding domain) which negatively regulates the basic helix-loop-helix (bHLH) transcription factors by forming heterodimers and inhibiting their DNA binding and transcriptional activity. Implicated in regulating a variety of cellular processes, including cellular growth, senescence, differentiation, apoptosis, angiogenesis, and neoplastic transformation. Inhibits skeletal muscle and cardiac myocyte differentiation. Regulates the circadian clock by repressing the transcriptional activator activity of the CLOCK-ARNTL/BMAL1 heterodimer (By similarity). [UniProt]
Calculated Mw	16 kDa
Cellular Localization	Cytoplasm. Nucleus. [UniProt]

## Images



ARG59724 anti-ID1 antibody WB image

Western blot: 20 µg of HepG2 cell lysate stained with ARG59724 anti-ID1 antibody at 1:1000 dilution.



ARG59724 anti-ID1 antibody FACS image

Flow Cytometry: HepG2 cells were fixed with 2% paraformaldehyde (10 min) and then permeabilized with 90% methanol for 10 min. Cells were then incubated in 2% BSA to block non-specific protein-protein interactions followed by ARG59724 anti-ID1 antibody (right histogram) at 1:25 dilution for 60 min at 37°C, followed by DyLight®488 labelled secondary antibody. Isotype control antibody (left histogram) was rabbit IgG (1 µg/10<sup>6</sup> cells) used under the same conditions. Acquisition of > 10000 events was performed.