

## ARG59725 anti-SUMO4 (M55) antibody

Package: 100 µl  
Store at: -20°C

### Summary

Product Description	Rabbit Polyclonal antibody recognizes SUMO4 (M55)
Tested Reactivity	Hu
Tested Application	IHC-P, WB
Host	Rabbit
Clonality	Polyclonal
Isotype	IgG
Target Name	SUMO4 (M55)
Species	Human
Immunogen	KLH-conjugated synthetic peptide between aa. 34-63 of Human SUMO4.
Conjugation	Un-conjugated
Alternate Names	SUMO-4; IDDM5; SMT3H4; dJ281H8.4; Small ubiquitin-related modifier 4; Small ubiquitin-like protein 4

### Application Instructions

Application table	Application	Dilution
	IHC-P	1:50 - 1:100
	WB	1:1000
Application Note	* The dilutions indicate recommended starting dilutions and the optimal dilutions or concentrations should be determined by the scientist.	
Positive Control	HepG2	

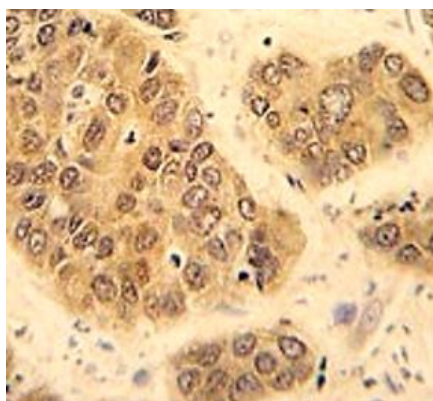
### Properties

Form	Liquid
Purification	This antibody is prepared by Saturated Ammonium Sulfate (SAS) precipitation followed by dialysis against PBS.
Buffer	PBS and 0.09% (W/V) Sodium azide.
Preservative	0.09% (W/V) Sodium azide.
Storage instruction	For continuous use, store undiluted antibody at 2-8°C for up to a week. For long-term storage, aliquot and store at -20°C or below. Storage in frost free freezers is not recommended. Avoid repeated freeze/thaw cycles. Suggest spin the vial prior to opening. The antibody solution should be gently mixed before use.
Note	For laboratory research only, not for drug, diagnostic or other use.

## Bioinformation

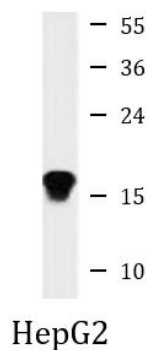
Gene Symbol	SUMO4
Gene Full Name	small ubiquitin-like modifier 4
Background	This gene is a member of the SUMO gene family. This family of genes encode small ubiquitin-related modifiers that are attached to proteins and control the target proteins' subcellular localization, stability, or activity. The protein described in this record is located in the cytoplasm and specifically modifies IKBA, leading to negative regulation of NF-kappa-B-dependent transcription of the IL12B gene. A specific polymorphism in this SUMO gene, which leads to the M55V substitution, has been associated with type I diabetes. The RefSeq contains this polymorphism. [provided by RefSeq, Jul 2008]
Function	Ubiquitin-like protein which can be covalently attached to target lysines as a monomer. Does not seem to be involved in protein degradation and may modulate protein subcellular localization, stability or activity. Upon oxidative stress, conjugates to various anti-oxidant enzymes, chaperones, and stress defense proteins. May also conjugate to NFKBIA, TFAP2A and FOS, negatively regulating their transcriptional activity, and to NR3C1, positively regulating its transcriptional activity. Covalent attachment to its substrates requires prior activation by the E1 complex SAE1-SAE2 and linkage to the E2 enzyme UBE2I. [UniProt]
Calculated Mw	11 kDa
PTM	In contrast to SUMO1, SUMO2 and SUMO3, seems to be insensitive to sentrin-specific proteases due to the presence of Pro-90. This may impair processing to mature form and conjugation to substrates. [UniProt]

## Images



ARG59725 anti-SUMO4 (M55) antibody IHC-P image

Immunohistochemistry: Formalin-fixed and paraffin-embedded Human hepatocarcinoma stained with ARG59725 anti-SUMO4 (M55) antibody.



ARG59725 anti-SUMO4 (M55) antibody WB image

Western blot: 35 µg of HepG2 cell lysate stained with ARG59725 anti-SUMO4 (M55) antibody.