

## ARG59784 anti-LGI1 antibody

Package: 100 µl  
Store at: -20°C

### Summary

Product Description	Rabbit Polyclonal antibody recognizes LGI1
Tested Reactivity	Hu, Ms, Rat
Tested Application	WB
Host	Rabbit
Clonality	Polyclonal
Isotype	IgG
Target Name	LGI1
Species	Human
Immunogen	Recombinant fusion protein corresponding to aa. 301-557 of Human LGI1 (NP_005088.1).
Conjugation	Un-conjugated
Alternate Names	ETL1; EPT; ADPAEF; ADLTE; Epitempin-1; IB1099; Leucine-rich glioma-inactivated protein 1; ADPEAF; EPITEMPIN

### Application Instructions

Application table	Application	Dilution
	WB	1:500 - 1:2000
Application Note	* The dilutions indicate recommended starting dilutions and the optimal dilutions or concentrations should be determined by the scientist.	
Positive Control	Rat brain, Mouse brain and U-87MG	
Observed Size	64 kDa	

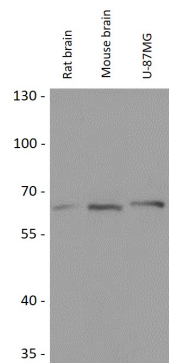
### Properties

Form	Liquid
Purification	Affinity purified.
Buffer	PBS (pH 7.3), 0.02% Sodium azide and 50% Glycerol.
Preservative	0.02% Sodium azide
Stabilizer	50% Glycerol
Storage instruction	For continuous use, store undiluted antibody at 2-8°C for up to a week. For long-term storage, aliquot and store at -20°C. Storage in frost free freezers is not recommended. Avoid repeated freeze/thaw cycles. Suggest spin the vial prior to opening. The antibody solution should be gently mixed before use.
Note	For laboratory research only, not for drug, diagnostic or other use.

Bioinformation

Gene Symbol	LGI1
Gene Full Name	leucine-rich, glioma inactivated 1
Background	This gene encodes a member of the secreted leucine-rich repeat (LRR) superfamily and shares homology with members of the SLIT protein family. The encoded protein may regulate the activity of voltage-gated potassium channels and may be involved in neuronal growth regulation and cell survival. This gene is rearranged as a result of translocations in glioblastoma cell lines, and it is frequently down-regulated or rearranged in malignant gliomas. Mutations in this gene result in autosomal dominant lateral temporal epilepsy. Alternative splicing results in multiple transcript variants. [provided by RefSeq, Apr 2015]
Function	Regulates voltage-gated potassium channels assembled from KCNA1, KCNA4 and KCNAB1. It slows down channel inactivation by precluding channel closure mediated by the KCNAB1 subunit. Ligand for ADAM22 that positively regulates synaptic transmission mediated by AMPA-type glutamate receptors (By similarity). Plays a role in suppressing the production of MMP1/3 through the phosphatidylinositol 3-kinase/ERK pathway. May play a role in the control of neuroblastoma cell survival. [UniProt]
Calculated Mw	64 kDa
PTM	Glycosylated. [UniProt]
Cellular Localization	Secreted. Cell junction, synapse. Note=Isoform 1 but not isoform 2 is secreted. Isoform 1 is enriched in the Golgi apparatus while isoform 2 accumulates in the endoplasmic reticulum. [UniProt]

Images



ARG59784 anti-LGI1 antibody WB image

Western blot: 25 µg of Rat brain, Mouse brain and U-87MG cell lysates stained with ARG59784 anti-LGI1 antibody at 1:3000 dilution.