

## ARG59794 anti-RPL14 antibody

Package: 100 µl  
Store at: -20°C

### Summary

Product Description	Rabbit Polyclonal antibody recognizes RPL14
Tested Reactivity	Hu, Ms, Rat
Tested Application	ICC/IF, WB
Host	Rabbit
Clonality	Polyclonal
Isotype	IgG
Target Name	RPL14
Species	Human
Immunogen	Recombinant fusion protein corresponding to aa. 1-215 of Human RPL14 (NP_003964.3).
Conjugation	Un-conjugated
Alternate Names	60S ribosomal protein L14; L14; RL14; CTG-B33; hRL14; CAG-ISL 7; CAG-ISL-7

### Application Instructions

Application table	Application	Dilution
	ICC/IF	1:50 - 1:200
	WB	1:500 - 1:2000
Application Note	* The dilutions indicate recommended starting dilutions and the optimal dilutions or concentrations should be determined by the scientist.	
Positive Control	Mouse ovary and 293T	
Observed Size	23 kDa	

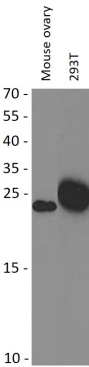
### Properties

Form	Liquid
Purification	Affinity purified.
Buffer	PBS (pH 7.3), 0.02% Sodium azide and 50% Glycerol.
Preservative	0.02% Sodium azide
Stabilizer	50% Glycerol
Storage instruction	For continuous use, store undiluted antibody at 2-8°C for up to a week. For long-term storage, aliquot and store at -20°C. Storage in frost free freezers is not recommended. Avoid repeated freeze/thaw cycles. Suggest spin the vial prior to opening. The antibody solution should be gently mixed before use.
Note	For laboratory research only, not for drug, diagnostic or other use.

Bioinformation

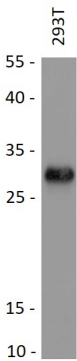
Gene Symbol	RPL14
Gene Full Name	ribosomal protein L14
Background	<p>Ribosomes, the organelles that catalyze protein synthesis, consist of a small 40S subunit and a large 60S subunit. Together these subunits are composed of 4 RNA species and approximately 80 structurally distinct proteins. This gene encodes a ribosomal protein that is a component of the 60S subunit. The protein belongs to the L14E family of ribosomal proteins. It contains a basic region-leucine zipper (bZIP)-like domain. The protein is located in the cytoplasm. This gene contains a trinucleotide (GCT) repeat tract whose length is highly polymorphic; these triplet repeats result in a stretch of alanine residues in the encoded protein. Transcript variants utilizing alternative polyA signals and alternative 5'-terminal exons exist but all encode the same protein. As is typical for genes encoding ribosomal proteins, there are multiple processed pseudogenes of this gene dispersed through the genome. [provided by RefSeq, Jul 2008]</p>
Calculated Mw	23 kDa

Images



ARG59794 anti-RPL14 antibody WB image

Western blot: 25 µg of Mouse ovary and 293T cell lysates stained with ARG59794 anti-RPL14 antibody at 1:1000 dilution.



ARG59794 anti-RPL14 antibody WB image

Western blot: 25 µg of 293T cell lysate stained with ARG59794 anti-RPL14 antibody at 1:1000 dilution through one-step method.