

ARG59798 anti-AP3B1 / HPS2 antibody

Package: 100 µl
Store at: -20°C

Summary

Product Description	Rabbit Polyclonal antibody recognizes AP3B1 / HPS2
Tested Reactivity	Hu, Ms, Rat
Tested Application	IHC-P, WB
Host	Rabbit
Clonality	Polyclonal
Isotype	IgG
Target Name	AP3B1 / HPS2
Species	Human
Immunogen	Recombinant fusion protein corresponding to aa. 895-1094 of Human AP3B1 (NP_003655.3).
Conjugation	Un-conjugated
Alternate Names	Adaptor-related protein complex 3 subunit beta-1; AP-3 complex subunit beta-1; HPS; ADTB3A; Clathrin assembly protein complex 3 beta-1 large chain; Adaptor protein complex AP-3 subunit beta-1; ADTB3; HPS2; PE; Beta-3A-adaptin

Application Instructions

Application table	Application	Dilution
	IHC-P	1:50 - 1:200
	WB	1:500 - 1:2000
Application Note	* The dilutions indicate recommended starting dilutions and the optimal dilutions or concentrations should be determined by the scientist.	
Positive Control	Mouse liver and SW620	
Observed Size	132 kDa	

Properties

Form	Liquid
Purification	Affinity purified.
Buffer	PBS (pH 7.3), 0.02% Sodium azide and 50% Glycerol.
Preservative	0.02% Sodium azide
Stabilizer	50% Glycerol
Storage instruction	For continuous use, store undiluted antibody at 2-8°C for up to a week. For long-term storage, aliquot and store at -20°C. Storage in frost free freezers is not recommended. Avoid repeated freeze/thaw cycles. Suggest spin the vial prior to opening. The antibody solution should be gently mixed before use.

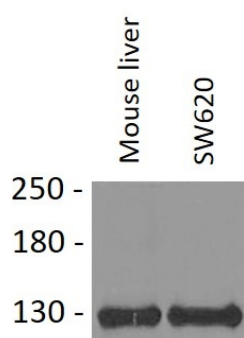
Note

For laboratory research only, not for drug, diagnostic or other use.

Bioinformation

Gene Symbol	AP3B1
Gene Full Name	adaptor-related protein complex 3, beta 1 subunit
Background	This gene encodes a protein that may play a role in organelle biogenesis associated with melanosomes, platelet dense granules, and lysosomes. The encoded protein is part of the heterotetrameric AP-3 protein complex which interacts with the scaffolding protein clathrin. Mutations in this gene are associated with Hermansky-Pudlak syndrome type 2. Two transcript variants encoding different isoforms have been found for this gene. [provided by RefSeq, Nov 2012]
Function	Subunit of non-clathrin- and clathrin-associated adaptor protein complex 3 (AP-3) that plays a role in protein sorting in the late-Golgi/trans-Golgi network (TGN) and/or endosomes. The AP complexes mediate both the recruitment of clathrin to membranes and the recognition of sorting signals within the cytosolic tails of transmembrane cargo molecules. AP-3 appears to be involved in the sorting of a subset of transmembrane proteins targeted to lysosomes and lysosome-related organelles. In concert with the BLOC-1 complex, AP-3 is required to target cargos into vesicles assembled at cell bodies for delivery into neurites and nerve terminals. [UniProt]
Calculated Mw	121 kDa
PTM	Phosphorylated on serine residues. [UniProt]
Cellular Localization	Cytoplasmic vesicle, clathrin-coated vesicle membrane; Peripheral membrane protein; Cytoplasmic side. Golgi apparatus. Note=Component of the coat surrounding the cytoplasmic face of coated vesicles located at the Golgi complex. [UniProt]

Images



ARG59798 anti-AP3B1 / HPS2 antibody WB image

Western blot: 25 µg of Mouse liver and SW620 cell lysates stained with ARG59798 anti-AP3B1 / HPS2 antibody at 1:1000 dilution.