

## ARG59802 anti-DPP3 antibody

Package: 100 µl  
Store at: -20°C

### Summary

Product Description	Rabbit Polyclonal antibody recognizes DPP3
Tested Reactivity	Hu, Ms, Rat
Tested Application	WB
Host	Rabbit
Clonality	Polyclonal
Isotype	IgG
Target Name	DPP3
Species	Human
Immunogen	Recombinant fusion protein corresponding to aa. 1-280 of Human DPP3 (NP_569710.2).
Conjugation	Un-conjugated
Alternate Names	DPP III; Enkephalinase B; Dipeptidyl arylamidase III; Dipeptidyl peptidase III; EC 3.4.14.4; Dipeptidyl aminopeptidase III; DPPIII; Dipeptidyl peptidase 3

### Application Instructions

Application table	Application	Dilution
	WB	1:500 - 1:2000
Application Note	* The dilutions indicate recommended starting dilutions and the optimal dilutions or concentrations should be determined by the scientist.	
Positive Control	Rat liver, Mouse liver and MCF7	
Observed Size	83 kDa	

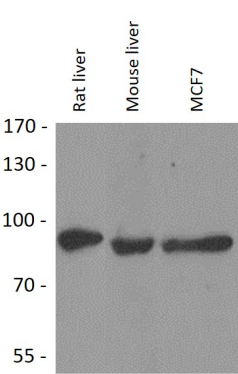
### Properties

Form	Liquid
Purification	Affinity purified.
Buffer	PBS (pH 7.3), 0.02% Sodium azide and 50% Glycerol.
Preservative	0.02% Sodium azide
Stabilizer	50% Glycerol
Storage instruction	For continuous use, store undiluted antibody at 2-8°C for up to a week. For long-term storage, aliquot and store at -20°C. Storage in frost free freezers is not recommended. Avoid repeated freeze/thaw cycles. Suggest spin the vial prior to opening. The antibody solution should be gently mixed before use.
Note	For laboratory research only, not for drug, diagnostic or other use.

Bioinformation

Gene Symbol	DPP3
Gene Full Name	dipeptidyl-peptidase 3
Background	This gene encodes a protein that is a member of the M49 family of metallopeptidases. This cytoplasmic protein binds a single zinc ion with its zinc-binding motif (HELLGH) and has post-proline dipeptidyl aminopeptidase activity, cleaving Xaa-Pro dipeptides from the N-termini of proteins. Increased activity of this protein is associated with endometrial and ovarian cancers. Alternatively spliced transcript variants have been found for this gene. [provided by RefSeq, Feb 2012]
Function	Cleaves and degrades of the opioid peptide enkephalin. Also cleaves Arg-Arg-beta-naphthylamide. [UniProt]
Calculated Mw	83 kDa
Cellular Localization	Cytoplasm, cytosol. [UniProt]

Images



ARG59802 anti-DPP3 antibody WB image

Western blot: 25 µg of Rat liver, Mouse liver and MCF7 cell lysates stained with ARG59802 anti-DPP3 antibody at 1:1000 dilution.