

ARG59817 anti-Pramef20 antibody

Package: 100 µl
Store at: -20°C

Summary

Product Description	Rabbit Polyclonal antibody recognizes Pramef20
Tested Reactivity	Hu, Ms, Rat
Tested Application	IHC-P, WB
Host	Rabbit
Clonality	Polyclonal
Isotype	IgG
Target Name	Pramef20
Species	Mouse
Immunogen	Recombinant fusion protein corresponding to aa. 67-274 of Mouse Pramef20 (NP_001108549.1).
Conjugation	Un-conjugated
Alternate Names	PRAMEF21; PRAME family member 20

Application Instructions

Application table	Application	Dilution
	IHC-P	1:100 - 1:200
	WB	1:500 - 1:2000
Application Note	* The dilutions indicate recommended starting dilutions and the optimal dilutions or concentrations should be determined by the scientist.	
Positive Control	Rat heart and Mouse skeletal muscle	
Observed Size	50 kDa	

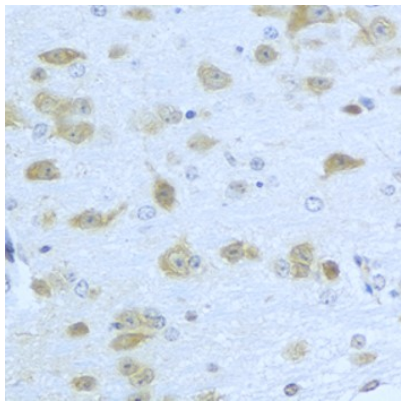
Properties

Form	Liquid
Purification	Affinity purified.
Buffer	PBS (pH 7.3), 0.02% Sodium azide and 50% Glycerol.
Preservative	0.02% Sodium azide
Stabilizer	50% Glycerol
Storage instruction	For continuous use, store undiluted antibody at 2-8°C for up to a week. For long-term storage, aliquot and store at -20°C. Storage in frost free freezers is not recommended. Avoid repeated freeze/thaw cycles. Suggest spin the vial prior to opening. The antibody solution should be gently mixed before use.
Note	For laboratory research only, not for drug, diagnostic or other use.

Bioinformation

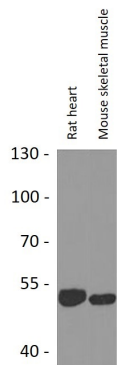
Gene Symbol	PRAMEF20
Gene Full Name	PRAME family member 20
Calculated Mw	55 kDa

Images



ARG59817 anti-Pramef20 antibody IHC-P image

Immunohistochemistry: Paraffin-embedded Mouse brain stained with ARG59817 anti-Pramef20 antibody at 1:100 dilution.



ARG59817 anti-Pramef20 antibody WB image

Western blot: 25 µg of Rat heart and Mouse skeletal muscle lysates stained with ARG59817 anti-Pramef20 antibody at 1:1000 dilution.