

ARG59835 anti-U2AF1 antibody

Package: 100 µl
Store at: -20°C

Summary

Product Description	Rabbit Polyclonal antibody recognizes U2AF1
Tested Reactivity	Hu, Ms, Rat
Tested Application	IHC-P, IP, WB
Host	Rabbit
Clonality	Polyclonal
Isotype	IgG
Target Name	U2AF1
Species	Human
Immunogen	Synthetic peptide within aa. 1-100 of Human U2AF1 (NP_006749.1).
Conjugation	Un-conjugated
Alternate Names	RN; FP793; U2AF35; U2AFBP; RNU2AF1

Application Instructions

Application table	Application	Dilution
	IHC-P	1:50 - 1:200
	IP	Assay-dependent
	WB	1:500 - 1:2000
Application Note	* The dilutions indicate recommended starting dilutions and the optimal dilutions or concentrations should be determined by the scientist.	
Positive Control	Rat spleen, Mouse kidney and 293T	
Observed Size	38 kDa	

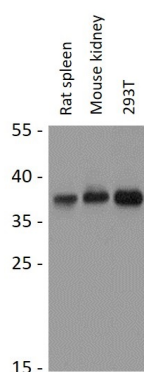
Properties

Form	Liquid
Purification	Affinity purified.
Buffer	PBS (pH 7.3), 0.02% Sodium azide and 50% Glycerol.
Preservative	0.02% Sodium azide
Stabilizer	50% Glycerol
Storage instruction	For continuous use, store undiluted antibody at 2-8°C for up to a week. For long-term storage, aliquot and store at -20°C. Storage in frost free freezers is not recommended. Avoid repeated freeze/thaw cycles. Suggest spin the vial prior to opening. The antibody solution should be gently mixed before use.

Bioinformation

Gene Symbol	U2AF1
Gene Full Name	U2 small nuclear RNA auxiliary factor 1
Background	This gene belongs to the splicing factor SR family of genes. U2 auxiliary factor, comprising a large and a small subunit, is a non-snRNP protein required for the binding of U2 snRNP to the pre-mRNA branch site. This gene encodes the small subunit which plays a critical role in both constitutive and enhancer-dependent RNA splicing by directly mediating interactions between the large subunit and proteins bound to the enhancers. Alternatively spliced transcript variants encoding different isoforms have been identified. [provided by RefSeq, Jul 2008]
Function	Plays a critical role in both constitutive and enhancer-dependent splicing by mediating protein-protein interactions and protein-RNA interactions required for accurate 3'-splice site selection. Recruits U2 snRNP to the branch point. Directly mediates interactions between U2AF2 and proteins bound to the enhancers and thus may function as a bridge between U2AF2 and the enhancer complex to recruit it to the adjacent intron. [UniProt]
Calculated Mw	28 kDa
Cellular Localization	Nucleus. Nucleus speckle. [UniProt]

Images



ARG59835 anti-U2AF1 antibody WB image

Western blot: 25 µg of Rat spleen, Mouse kidney and 293T cell lysates stained with ARG59835 anti-U2AF1 antibody at 1:3000 dilution.