

ARG59854 anti-DYNLL2 antibody

Package: 100 µl
Store at: -20°C

Summary

Product Description	Rabbit Polyclonal antibody recognizes DYNLL2
Tested Reactivity	Hu, Ms, Rat
Tested Application	ICC/IF, WB
Host	Rabbit
Clonality	Polyclonal
Isotype	IgG
Target Name	DYNLL2
Species	Human
Immunogen	Recombinant fusion protein corresponding to aa. 1-89 of Human DYNLL2 (NP_542408.1).
Conjugation	Un-conjugated
Alternate Names	Dynein light chain 2, cytoplasmic; DNCL1B; RSPH22; DLC8b; Dynein light chain LC8-type 2; 8 kDa dynein light chain b; Dlc2

Application Instructions

Application table	Application	Dilution
	ICC/IF	1:50 - 1:200
	WB	1:500 - 1:2000
Application Note	* The dilutions indicate recommended starting dilutions and the optimal dilutions or concentrations should be determined by the scientist.	
Positive Control	Mouse kidney and A431	
Observed Size	12 kDa	

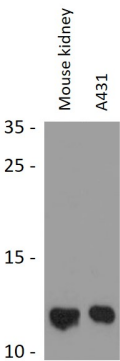
Properties

Form	Liquid
Purification	Affinity purified.
Buffer	PBS (pH 7.3), 0.02% Sodium azide and 50% Glycerol.
Preservative	0.02% Sodium azide
Stabilizer	50% Glycerol
Storage instruction	For continuous use, store undiluted antibody at 2-8°C for up to a week. For long-term storage, aliquot and store at -20°C. Storage in frost free freezers is not recommended. Avoid repeated freeze/thaw cycles. Suggest spin the vial prior to opening. The antibody solution should be gently mixed before use.
Note	For laboratory research only, not for drug, diagnostic or other use.

Bioinformation

Gene Symbol	DYNLL2
Gene Full Name	dynein, light chain, LC8-type 2
Function	Acts as one of several non-catalytic accessory components of the cytoplasmic dynein 1 complex that are thought to be involved in linking dynein to cargos and to adapter proteins that regulate dynein function. Cytoplasmic dynein 1 acts as a motor for the intracellular retrograde motility of vesicles and organelles along microtubules. May play a role in changing or maintaining the spatial distribution of cytoskeletal structures (By similarity). [UniProt]
Calculated Mw	10 kDa
Cellular Localization	Cytoplasm, cytoskeleton. [UniProt]

Images



ARG59854 anti-DYNLL2 antibody WB image

Western blot: 25 µg of Mouse kidney and A431 cell lysates stained with ARG59854 anti-DYNLL2 antibody at 1:3000 dilution.