

ARG59889 anti-ZO3 antibody

Package: 50 µg
Store at: -20°C

Summary

Product Description	Rabbit Polyclonal antibody recognizes ZO3
Tested Reactivity	Ms, Rat
Predict Reactivity	Hm
Tested Application	IHC-P, WB
Host	Rabbit
Clonality	Polyclonal
Isotype	IgG
Target Name	ZO3
Species	Mouse
Immunogen	Synthetic peptide corresponding to aa. 885-905 of Mouse ZO3. (RARDVESSDDEGYDWGPATDL)
Conjugation	Un-conjugated
Alternate Names	ZO3; Tight junction protein ZO-3; Zonula occludens protein 3; Zona occludens protein 3; ZO-3; Tight junction protein 3

Application Instructions

Application table	Application	Dilution
	IHC-P	0.5 - 1 µg/ml
	WB	0.1 - 0.5 µg/ml
Application Note	IHC-P: Antigen Retrieval: Heat mediation was recommended. * The dilutions indicate recommended starting dilutions and the optimal dilutions or concentrations should be determined by the scientist.	
Observed Size	~ 105 kDa	

Properties

Form	Liquid
Purification	Affinity purification with immunogen.
Buffer	0.2% Na2HPO4, 0.9% NaCl, 0.05% Thimerosal, 0.05% Sodium azide and 5% BSA.
Preservative	0.05% Thimerosal and 0.05% Sodium azide
Stabilizer	5% BSA
Concentration	0.5 mg/ml
Storage instruction	For continuous use, store undiluted antibody at 2-8°C for up to a week. For long-term storage, aliquot and store at -20°C or below. Storage in frost free freezers is not recommended. Avoid repeated freeze/thaw cycles. Suggest spin the vial prior to opening. The antibody solution should be gently mixed

before use.

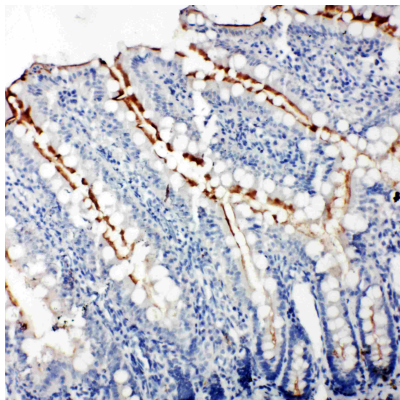
Note

For laboratory research only, not for drug, diagnostic or other use.

Bioinformation

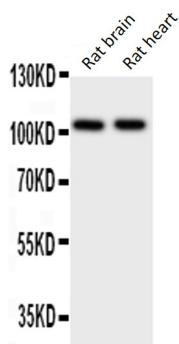
Gene Symbol	TJP3
Gene Full Name	tight junction protein 3
Background	<p>The protein encoded by this gene is a member of the membrane-associated guanylate kinase-like (MAGUK) protein family which is characterized by members having multiple PDZ domains, a single SH3 domain, and a single guanylate kinase-like (GUK)-domain. In addition, members of the zonula occludens protein subfamily have an acidic domain, a basic arginine-rich region, and a proline-rich domain. The protein encoded by this gene plays a role in the linkage between the actin cytoskeleton and tight-junctions and also sequesters cyclin D1 at tight junctions during mitosis. Alternative splicing results in multiple transcript variants encoding distinct isoforms. This gene has a partial pseudogene on chromosome 1. [provided by RefSeq, May 2012]</p>
Calculated Mw	101 kDa
Cellular Localization	<p>Cell membrane; Peripheral membrane protein; Cytoplasmic side. Cell junction, tight junction. Nucleus. Note=Exhibits predominant nuclear expression in proliferating cells but is exclusively junctionally expressed after confluence is reached (PubMed:23608536). Shows an epithelial-specific tight junction localization in a TJP1/TJP2-dependent fashion (By similarity). [UniProt]</p>

Images



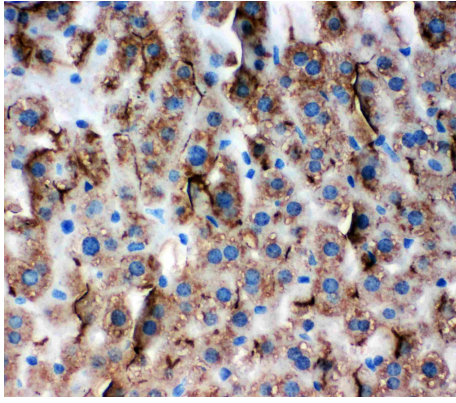
ARG59889 anti-ZO3 antibody IHC-P image

Immunohistochemistry: Paraffin-embedded Rat intestine tissue stained with ARG59889 anti-ZO3 antibody.



ARG59889 anti-ZO3 antibody WB image

Western blot: Rat brain and Rat heart lysates stained with ARG59889 anti-ZO3 antibody.



ARG59889 anti-ZO3 antibody IHC-P image

Immunohistochemistry: Paraffin-embedded Mouse liver tissue stained with ARG59889 anti-ZO3 antibody.