

## ARG59956 anti-BCAS3 antibody

Package: 100 µl  
Store at: -20°C

### Summary

Product Description	Rabbit Polyclonal antibody recognizes BCAS3
Tested Reactivity	Hu, Ms, Rat
Tested Application	ICC/IF, IHC-P, IP, WB
Host	Rabbit
Clonality	Polyclonal
Isotype	IgG
Target Name	BCAS3
Species	Human
Immunogen	Recombinant fusion protein corresponding to aa. 674-913 of Human BCAS3 (NP_060149.3).
Conjugation	Un-conjugated
Alternate Names	Breast carcinoma-amplified sequence 3; GAOB1; MAAB

### Application Instructions

Application table	Application	Dilution
	ICC/IF	1:50 - 1:200
	IHC-P	1:50 - 1:200
	IP	1:50 - 1:200
	WB	1:500 - 1:2000
Application Note	* The dilutions indicate recommended starting dilutions and the optimal dilutions or concentrations should be determined by the scientist.	
Positive Control	Rat brain and HeLa	
Observed Size	115 kDa	

### Properties

Form	Liquid
Purification	Affinity purified.
Buffer	PBS (pH 7.3), 0.02% Sodium azide and 50% Glycerol.
Preservative	0.02% Sodium azide
Stabilizer	50% Glycerol
Storage instruction	For continuous use, store undiluted antibody at 2-8°C for up to a week. For long-term storage, aliquot and store at -20°C. Storage in frost free freezers is not recommended. Avoid repeated freeze/thaw cycles. Suggest spin the vial prior to opening. The antibody solution should be gently mixed before use.

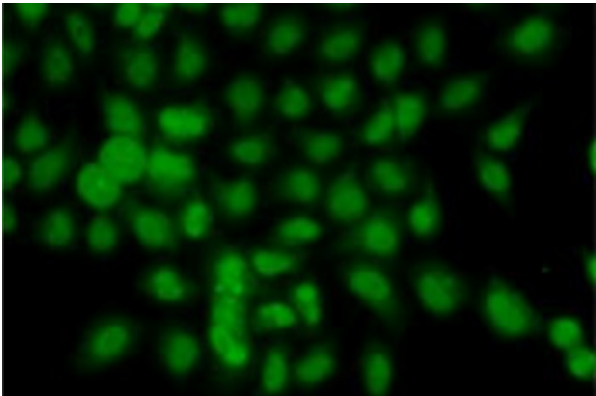
Note

For laboratory research only, not for drug, diagnostic or other use.

Bioinformation

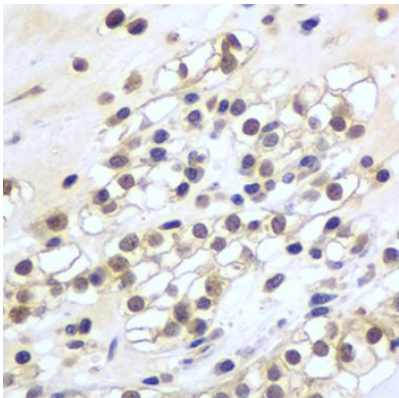
Gene Symbol	BCAS3
Gene Full Name	breast carcinoma amplified sequence 3
Function	Plays a role in angiogenesis. Participates in the regulation of cell polarity and directional endothelial cell migration by mediating both the activation and recruitment of CDC42 and the reorganization of the actin cytoskeleton at the cell leading edge. Promotes filipodia formation (By similarity). Functions synergistically with PELP1 as a transcriptional coactivator of estrogen receptor-responsive genes. Stimulates histone acetyltransferase activity. Binds to chromatin. [UniProt]
Calculated Mw	101 kDa
Cellular Localization	Nucleus. Cytoplasm. Cytoplasm, cytoskeleton. Note=Localizes in the cytoplasm in stationary cells. Translocates from the cytoplasm to the leading edge in motile cells. Colocalizes with microtubules and intermediate filaments in both stationary and motile cells (By similarity). Associates with chromatin. Recruited to estrogen receptor-induced promoters in a PELP1-dependent manner. [UniProt]

Images



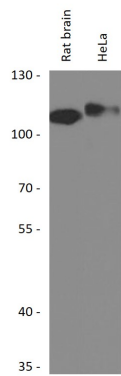
ARG59956 anti-BCAS3 antibody ICC/IF image

Immunofluorescence: A549 cells stained with ARG59956 anti-BCAS3 antibody.



ARG59956 anti-BCAS3 antibody IHC-P image

Immunohistochemistry: Paraffin-embedded Human kidney cancer stained with ARG59956 anti-BCAS3 antibody at 1:100 dilution.



#### ARG59956 anti-BCAS3 antibody WB image

Western blot: 25 µg of Rat brain and HeLa cell lysates stained with ARG59956 anti-BCAS3 antibody at 1:1000 dilution.