

## ARG59957 anti-UBE2J2 antibody

Package: 100 µl  
Store at: -20°C

### Summary

Product Description	Rabbit Polyclonal antibody recognizes UBE2J2
Tested Reactivity	Hu, Ms, Rat
Tested Application	WB
Host	Rabbit
Clonality	Polyclonal
Isotype	IgG
Target Name	UBE2J2
Species	Human
Immunogen	Recombinant fusion protein corresponding to aa. 1-230 of Human UBE2J2 (NP_477515.2).
Conjugation	Un-conjugated
Alternate Names	EC 6.3.2.19; NCUBE2; Non-canonical ubiquitin-conjugating enzyme 2; PRO2121; NCUBE-2; Ubiquitin-conjugating enzyme E2 J2

### Application Instructions

Application table	Application	Dilution
	WB	1:500 - 1:2000
Application Note	* The dilutions indicate recommended starting dilutions and the optimal dilutions or concentrations should be determined by the scientist.	
Positive Control	Mouse brain and U251	
Observed Size	29 kDa	

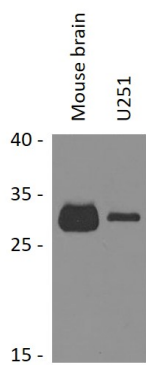
### Properties

Form	Liquid
Purification	Affinity purified.
Buffer	PBS (pH 7.3), 0.02% Sodium azide and 50% Glycerol.
Preservative	0.02% Sodium azide
Stabilizer	50% Glycerol
Storage instruction	For continuous use, store undiluted antibody at 2-8°C for up to a week. For long-term storage, aliquot and store at -20°C. Storage in frost free freezers is not recommended. Avoid repeated freeze/thaw cycles. Suggest spin the vial prior to opening. The antibody solution should be gently mixed before use.
Note	For laboratory research only, not for drug, diagnostic or other use.

Bioinformation

Gene Symbol	UBE2J2
Gene Full Name	ubiquitin-conjugating enzyme E2, J2
Background	The modification of proteins with ubiquitin is an important cellular mechanism for targeting abnormal or short-lived proteins for degradation. Ubiquitination involves at least three classes of enzymes: ubiquitin-activating enzymes, or E1s, ubiquitin-conjugating enzymes, or E2s, and ubiquitin-protein ligases, or E3s. This gene encodes a member of the E2 ubiquitin-conjugating enzyme family. This enzyme is located in the membrane of the endoplasmic reticulum. Multiple alternatively spliced transcript variants have been found for this gene, but the full-length nature of some variants has not been defined. [provided by RefSeq, Jul 2008]
Function	Catalyzes the covalent attachment of ubiquitin to other proteins. Seems to function in the selective degradation of misfolded membrane proteins from the endoplasmic reticulum (ERAD) (By similarity). [UniProt]
Calculated Mw	29 kDa
Cellular Localization	Endoplasmic reticulum membrane; Single-pass type IV membrane protein. [UniProt]

Images



ARG59957 anti-UBE2J2 antibody WB image

Western blot: 25 µg of Mouse brain and U251 cell lysates stained with ARG59957 anti-UBE2J2 antibody at 1:1000 dilution.