

ARG59964 anti-RPS6KL1 antibody

Package: 100 µl
Store at: -20°C

Summary

Product Description	Rabbit Polyclonal antibody recognizes RPS6KL1
Tested Reactivity	Hu, Ms, Rat
Tested Application	ICC/IF, WB
Host	Rabbit
Clonality	Polyclonal
Isotype	IgG
Target Name	RPS6KL1
Species	Human
Immunogen	Recombinant fusion protein corresponding to aa. 1-130 of Human RPS6KL1 (NP_113652.2).
Conjugation	Un-conjugated
Alternate Names	EC 2.7.11.1; Ribosomal protein S6 kinase-like 1; RSKL2

Application Instructions

Application table	Application	Dilution
	ICC/IF	1:50 - 1:200
	WB	1:500 - 1:2000
Application Note	* The dilutions indicate recommended starting dilutions and the optimal dilutions or concentrations should be determined by the scientist.	
Positive Control	Mouse brain and THP-1	
Observed Size	60 kDa	

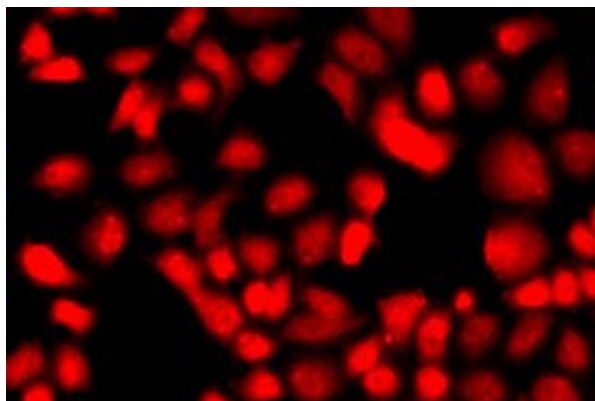
Properties

Form	Liquid
Purification	Affinity purified.
Buffer	PBS (pH 7.3), 0.02% Sodium azide and 50% Glycerol.
Preservative	0.02% Sodium azide
Stabilizer	50% Glycerol
Storage instruction	For continuous use, store undiluted antibody at 2-8°C for up to a week. For long-term storage, aliquot and store at -20°C. Storage in frost free freezers is not recommended. Avoid repeated freeze/thaw cycles. Suggest spin the vial prior to opening. The antibody solution should be gently mixed before use.
Note	For laboratory research only, not for drug, diagnostic or other use.

Bioinformation

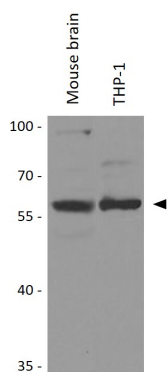
Gene Symbol	RPS6KL1
Gene Full Name	ribosomal protein S6 kinase-like 1
Calculated Mw	60 kDa

Images



ARG59964 anti-RPS6KL1 antibody ICC/IF image

Immunofluorescence: A549 cells stained with ARG59964 anti-RPS6KL1 antibody.



ARG59964 anti-RPS6KL1 antibody WB image

Western blot: 25 µg of Mouse brain and THP-1 cell lysates stained with ARG59964 anti-RPS6KL1 antibody at 1:1000 dilution.