

ARG59971
anti-ATAD3A + ATAD3B antibodyPackage: 100 µl
Store at: -20°C

Summary

Product Description	Rabbit Polyclonal antibody recognizes ATAD3A + ATAD3B
Tested Reactivity	Hu, Ms, Rat
Tested Application	IHC-P, WB
Host	Rabbit
Clonality	Polyclonal
Isotype	IgG
Target Name	ATAD3A + ATAD3B
Species	Human
Immunogen	Recombinant fusion protein corresponding to aa. 1-240 of Human ATAD3A (NP_001164006.1).
Conjugation	Un-conjugated
Alternate Names	ATPase family AAA domain-containing protein 3A

Application Instructions

Application table	Application	Dilution
	IHC-P	1:100 - 1:200
	WB	1:500 - 1:2000
Application Note	* The dilutions indicate recommended starting dilutions and the optimal dilutions or concentrations should be determined by the scientist.	
Positive Control	Mouse brain	
Observed Size	65 kDa	

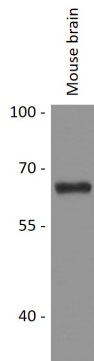
Properties

Form	Liquid
Purification	Affinity purified.
Buffer	PBS (pH 7.3), 0.02% Sodium azide and 50% Glycerol.
Preservative	0.02% Sodium azide
Stabilizer	50% Glycerol
Storage instruction	For continuous use, store undiluted antibody at 2-8°C for up to a week. For long-term storage, aliquot and store at -20°C. Storage in frost free freezers is not recommended. Avoid repeated freeze/thaw cycles. Suggest spin the vial prior to opening. The antibody solution should be gently mixed before use.
Note	For laboratory research only, not for drug, diagnostic or other use.

Bioinformation

Gene Symbol	ATAD3A
Gene Full Name	ATPase family, AAA domain containing 3A
Background	ATAD3A and ATAD3B (MIM 612317) are mitochondrial membrane proteins that contribute to the stabilization of large mitochondrial DNA (mtDNA)-protein complexes called nucleoids (He et al., 2007 [PubMed 17210950]).[supplied by OMIM, Sep 2008]
Function	Essential for mitochondrial network organization, mitochondrial metabolism and cell growth at organism and cellular level. May play an important in mitochondrial protein synthesis. May also participate in mitochondrial DNA replication. May bind to mitochondrial DNA D-loops and contribute to nucleoid stability. Required for enhanced channeling of cholesterol for hormone-dependent steroidogenesis. [UniProt]
Calculated Mw	71 kDa
Cellular Localization	Mitochondrion inner membrane; Single-pass membrane protein. Mitochondrion matrix, mitochondrion nucleoid. Note=In the mitochondrial inner membrane, enriched in sites with the potential to form contacts with the outer membrane (PubMed:20349121, PubMed:20154147). The N-terminal domain interacts with the inner surface of the mitochondrial outer membrane and the C-terminal domain localizes in a specific matrix compartment, where it is associated with nucleoids (PubMed:18063578). [UniProt]

Images



ARG59971 anti-ATAD3A + ATAD3B antibody WB image

Western blot: 25 µg of Mouse brain lysate stained with ARG59971 anti-ATAD3A + ATAD3B antibody at 1:1000 dilution.