

ARG59972 anti-KANSL3 antibody

Package: 100 µl
Store at: -20°C

Summary

Product Description	Rabbit Polyclonal antibody recognizes KANSL3
Tested Reactivity	Hu
Tested Application	WB
Host	Rabbit
Clonality	Polyclonal
Isotype	IgG
Target Name	KANSL3
Species	Human
Immunogen	Recombinant fusion protein corresponding to aa. 1-200 of Human KANSL3 (NP_001108488.1).
Conjugation	Un-conjugated
Alternate Names	NSL3; Rcd1; Serum inhibited-related protein; Testis development protein PRTD; Non-specific lethal 3 homolog; NSL complex protein NSL3; KIAA1310; KAT8 regulatory NSL complex subunit 3

Application Instructions

Application table	<table> <tr> <th>Application</th><th>Dilution</th></tr> <tr> <td>WB</td><td>1:500 - 1:2000</td></tr> </table>	Application	Dilution	WB	1:500 - 1:2000
Application	Dilution				
WB	1:500 - 1:2000				
Application Note	* The dilutions indicate recommended starting dilutions and the optimal dilutions or concentrations should be determined by the scientist.				
Positive Control	U251				
Observed Size	120 kDa				

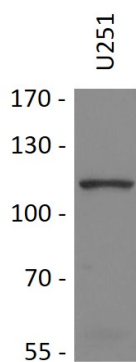
Properties

Form	Liquid
Purification	Affinity purified.
Buffer	PBS (pH 7.3), 0.02% Sodium azide and 50% Glycerol.
Preservative	0.02% Sodium azide
Stabilizer	50% Glycerol
Storage instruction	For continuous use, store undiluted antibody at 2-8°C for up to a week. For long-term storage, aliquot and store at -20°C. Storage in frost free freezers is not recommended. Avoid repeated freeze/thaw cycles. Suggest spin the vial prior to opening. The antibody solution should be gently mixed before use.
Note	For laboratory research only, not for drug, diagnostic or other use.

Bioinformation

Gene Symbol	KANSL3
Gene Full Name	KAT8 regulatory NSL complex subunit 3
Function	As part of the NSL complex it is involved in acetylation of nucleosomal histone H4 on several lysine residues and therefore may be involved in the regulation of transcription. [UniProt]
Calculated Mw	96 kDa
Cellular Localization	Nucleus. [UniProt]

Images



ARG59972 anti-KANSL3 antibody WB image

Western blot: 25 µg of U251 cell lysate stained with ARG59972 anti-KANSL3 antibody at 1:1000 dilution.