

ARG59987 anti-GINS2 / PSF2 antibody

Package: 100 µl
Store at: -20°C

Summary

Product Description	Rabbit Polyclonal antibody recognizes GINS2 / PSF2
Tested Reactivity	Hu
Tested Application	WB
Host	Rabbit
Clonality	Polyclonal
Isotype	IgG
Target Name	GINS2 / PSF2
Species	Human
Immunogen	Recombinant fusion protein corresponding to aa. 1-185 of Human GINS2 (NP_057179.1).
Conjugation	Un-conjugated
Alternate Names	HSPC037; PSF2; DNA replication complex GINS protein PSF2; Pfs2; GINS complex subunit 2

Application Instructions

Application table	<table> <tr> <th>Application</th><th>Dilution</th></tr> <tr> <td>WB</td><td>1:500 - 1:2000</td></tr> </table>	Application	Dilution	WB	1:500 - 1:2000
Application	Dilution				
WB	1:500 - 1:2000				
Application Note	* The dilutions indicate recommended starting dilutions and the optimal dilutions or concentrations should be determined by the scientist.				
Positive Control	Jurkat				
Observed Size	21 kDa				

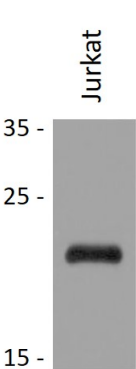
Properties

Form	Liquid
Purification	Affinity purified.
Buffer	PBS (pH 7.3), 0.02% Sodium azide and 50% Glycerol.
Preservative	0.02% Sodium azide
Stabilizer	50% Glycerol
Storage instruction	For continuous use, store undiluted antibody at 2-8°C for up to a week. For long-term storage, aliquot and store at -20°C. Storage in frost free freezers is not recommended. Avoid repeated freeze/thaw cycles. Suggest spin the vial prior to opening. The antibody solution should be gently mixed before use.
Note	For laboratory research only, not for drug, diagnostic or other use.

Bioinformation

Gene Symbol	GINS2
Gene Full Name	GINS complex subunit 2 (Psf2 homolog)
Background	The yeast heterotetrameric GINS complex is made up of Sld5 (GINS4; MIM 610611), Psf1 (GINS1; MIM 610608), Psf2, and Psf3 (GINS3; MIM 610610). The formation of this complex is essential for the initiation of DNA replication in yeast and Xenopus egg extracts (Ueno et al., 2005 [PubMed 16287864]). See GINS1 for additional information about the GINS complex.[supplied by OMIM, Mar 2008]
Function	The GINS complex plays an essential role in the initiation of DNA replication, and progression of DNA replication forks. GINS complex seems to bind preferentially to single-stranded DNA. [UniProt]
Calculated Mw	21 kDa
Cellular Localization	Nucleus. [UniProt]

Images



ARG59987 anti-GINS2 / PSF2 antibody WB image

Western blot: 25 µg of Jurkat cell lysate stained with ARG59987 anti-GINS2 / PSF2 antibody at 1:1000 dilution.