

ARG59995 anti-DET1 antibody

Package: 100 µl
Store at: -20°C

Summary

Product Description	Rabbit Polyclonal antibody recognizes DET1
Tested Reactivity	Hu, Ms, Rat
Tested Application	WB
Host	Rabbit
Clonality	Polyclonal
Isotype	IgG
Target Name	DET1
Species	Human
Immunogen	Recombinant fusion protein corresponding to aa. 15-240 of Human DET1 (NP_060466.2).
Conjugation	Un-conjugated
Alternate Names	De-etiolated-1 homolog; DET1 homolog

Application Instructions

Application table	Application	Dilution
	WB	1:500 - 1:2000
Application Note	* The dilutions indicate recommended starting dilutions and the optimal dilutions or concentrations should be determined by the scientist.	
Positive Control	Mouse thymus and BT474	
Observed Size	55 kDa	

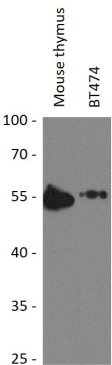
Properties

Form	Liquid
Purification	Affinity purified.
Buffer	PBS (pH 7.3), 0.02% Sodium azide and 50% Glycerol.
Preservative	0.02% Sodium azide
Stabilizer	50% Glycerol
Storage instruction	For continuous use, store undiluted antibody at 2-8°C for up to a week. For long-term storage, aliquot and store at -20°C. Storage in frost free freezers is not recommended. Avoid repeated freeze/thaw cycles. Suggest spin the vial prior to opening. The antibody solution should be gently mixed before use.
Note	For laboratory research only, not for drug, diagnostic or other use.

Bioinformation

Gene Symbol	DET1
Gene Full Name	de-etiolated homolog 1 (Arabidopsis)
Function	Component of the E3 ubiquitin ligase DCX DET1-COP1 complex, which is required for ubiquitination and subsequent degradation of target proteins. The complex is involved in JUN ubiquitination and degradation. [UniProt]
Calculated Mw	64 kDa
Cellular Localization	Nucleus. [UniProt]

Images



ARG59995 anti-DET1 antibody WB image

Western blot: 25 µg of Mouse thymus and BT474 cell lysates stained with ARG59995 anti-DET1 antibody at 1:1000 dilution.