

## ARG62668 anti-Albumin antibody [AL-01]

Package: 100 µg  
Store at: -20°C

### Summary

Product Description	Mouse Monoclonal antibody [AL-01] recognizes Albumin
Tested Reactivity	Hu
Tested Application	ELISA, IHC-P, RIA, WB
Specificity	The clone AL-01 reacts only with human serum albumin, a 65-67 kDa monomeric protein in human blood plasma; it is produced in liver. No cross-reactivity was observed with other serum proteins.
Host	Mouse
Clonality	Monoclonal
Clone	AL-01
Isotype	IgG1
Target Name	Albumin
Species	Human
Immunogen	Fraction of proteins containing albumin after ammonium sulphate precipitation and DEAE-chromatography of human serum.
Conjugation	Un-conjugated
Alternate Names	FDAH; PRO0883; PRO1341; Serum albumin; ANALBA; PRO0903

### Application Instructions

Application table	Application	Dilution
	ELISA	Assay-dependent
	IHC-P	5 µg/ml
	RIA	Assay-dependent
	WB	Assay-dependent
Application Note	* The dilutions indicate recommended starting dilutions and the optimal dilutions or concentrations should be determined by the scientist.	
Positive Control	IHC-P: Liver	

### Properties

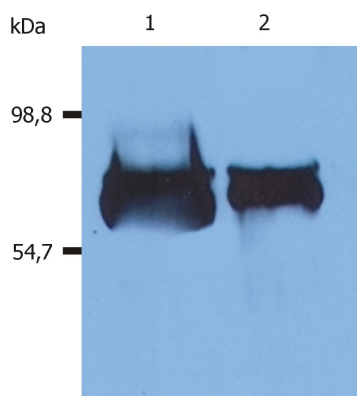
Form	Liquid
Purification	Purified from ascites by precipitation methods.
Purity	> 95% (by SDS-PAGE)
Buffer	PBS (pH 7.4) and 15 mM Sodium azide

Preservative	15 mM Sodium azide
Concentration	1 mg/ml
Storage instruction	For continuous use, store undiluted antibody at 2-8°C for up to a week. For long-term storage, aliquot and store at -20°C or below. Storage in frost free freezers is not recommended. Avoid repeated freeze/thaw cycles. Suggest spin the vial prior to opening. The antibody solution should be gently mixed before use.
Note	For laboratory research only, not for drug, diagnostic or other use.

## Bioinformation

Database links	<a href="#">GeneID: 213 Human</a> <a href="#">Swiss-port # P02768 Human</a>
Gene Symbol	ALB
Gene Full Name	albumin
Background	Human serum albumin (65-67 kDa) is the most abundant protein in human blood plasma (produced in the liver). It has a serum half-life of approximately 20 days.
Function	Serum albumin, the main protein of plasma, has a good binding capacity for water, Ca(2+), Na(+), K(+), fatty acids, hormones, bilirubin and drugs. Its main function is the regulation of the colloidal osmotic pressure of blood. Major zinc transporter in plasma, typically binds about 80% of all plasma zinc. [UniProt]
Research Area	Cancer antibody; Cell Biology and Cellular Response antibody; Controls and Markers antibody; Developmental Biology antibody; Metabolism antibody; Signaling Transduction antibody
Calculated Mw	69 kDa
PTM	Kenitra variant is partially O-glycosylated at Thr-620. It has two new disulfide bonds Cys-600 to Cys-602 and Cys-601 to Cys-606. Glycated in diabetic patients. Phosphorylated by FAM20C in the extracellular medium. Acetylated on Lys-223 by acetylsalicylic acid.

## Images



ARG62668 anti-Albumin antibody [AL-01] WB image

Western blot: 1. Human blood plasma 2. Human blood serum stained with ARG62668 anti-Albumin antibody [AL-01].