

ARG62711 anti-CD11a / LFA1 alpha antibody [M17 / 4] (Functional Grade)

Package: 100 µg
Store at: -20°C

Summary

| | |
|---------------------|--|
| Product Description | Functional grade and low endotoxin Rat Monoclonal antibody [M17/4] recognizes CD11a / LFA1 alpha |
| Tested Reactivity | Ms |
| Tested Application | FACS, FuncSt, IHC-Fr, IP |
| Specificity | The clone M17/4 reacts with CD11a (alpha-subunit of murine LFA-1), a 180 kDa type I transmembrane glycoprotein expressed on B and T lymphocytes, monocytes, macrophages, neutrophils, basophils and eosinophils. |
| Host | Rat |
| Clonality | Monoclonal |
| Clone | M17/4 |
| Isotype | IgG2a |
| Target Name | CD11a / LFA1 alpha |
| Species | Mouse |
| Immunogen | C57BL/6 mouse splenic secondary cytotoxic T lymphocytes |
| Conjugation | Un-conjugated |
| Alternate Names | Leukocyte adhesion glycoprotein LFA-1 alpha chain; LFA1A; LFA-1A; Integrin alpha-L; CD11A; Leukocyte function-associated molecule 1 alpha chain; LFA-1; CD11 antigen-like family member A; CD antigen CD11a |

Application Instructions

| Application table | Application | Dilution |
|-------------------|--|-----------------|
| | FACS | 1 µg/ml |
| | FuncSt | Assay-dependent |
| | IHC-Fr | Assay-dependent |
| | IP | Assay-dependent |
| Application Note | IHC-Fr: Acetone fixation. Functional studies: Blocking. * The dilutions indicate recommended starting dilutions and the optimal dilutions or concentrations should be determined by the scientist. | |
| Positive Control | IHC-Fr: Mouse spleen or thymus | |

Properties

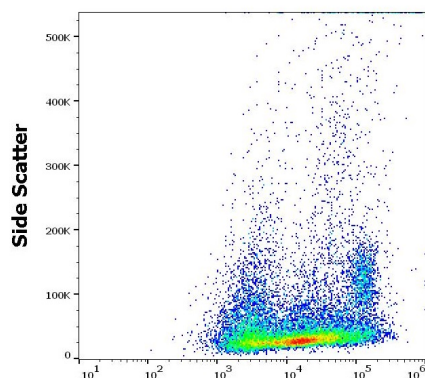
| | |
|--------------|------------------------------|
| Form | Liquid |
| Purification | Purification with Protein G. |

| | |
|---------------------|--|
| Purification Note | 0.2 µm filter sterilized. Endotoxin level is 95% (by SDS-PAGE) |
| Buffer | PBS (pH 7.4) |
| Concentration | 1 mg/ml |
| Storage instruction | For continuous use, store undiluted antibody at 2-8°C for up to a week. For long-term storage, aliquot and store at -20°C or below. Storage in frost free freezers is not recommended. Avoid repeated freeze/thaw cycles. Suggest spin the vial prior to opening. The antibody solution should be gently mixed before use. |
| Note | For laboratory research only, not for drug, diagnostic or other use. |

Bioinformation

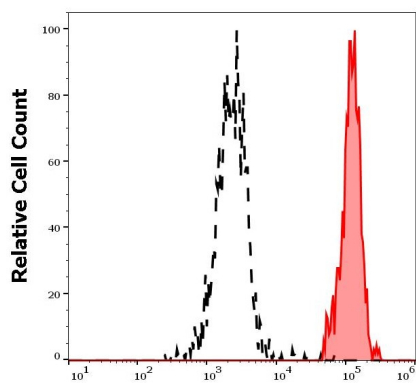
| | |
|----------------|--|
| Database links | GeneID: 16408 Mouse |
| Background | CD11a (LFA-1 alpha) together with CD18 constitute leukocyte function-associated antigen 1 (LFA-1), the alphaLbeta2 integrin. CD11a is implicated in activation of LFA-1 complex. LFA-1 is expressed on the plasma membrane of leukocytes in a low-affinity conformation. Cell stimulation by chemokines or other signals leads to induction the high-affinity conformation, which supports tight binding of LFA-1 to its ligands, the intercellular adhesion molecules ICAM-1, -2, -3. LFA-1 is thus involved in interaction of various immune cells and in their tissue-specific settlement, but participates also in control of cell differentiation and proliferation and of T-cell effector functions. |
| Research Area | Developmental Biology antibody; Immune System antibody; Signaling Transduction antibody |
| Calculated Mw | 129 kDa |
| PTM | In resting T-cells, up to 40% of surface ITGAL is constitutively phosphorylated. Phosphorylation causes conformational changes needed for ligand binding and is necessary for activation by some physiological agents. |

Images



ARG62711 anti-CD11a / LFA1 alpha antibody [M17 / 4] (Functional Grade) FACS image

Flow Cytometry: Murine splenocytes stained with ARG62711 anti-CD11a / LFA1 alpha antibody [M17 / 4] (Functional Grade) at 0.6 µg/ml dilution, followed by APC-conjugated Donkey anti-Rat antibody.



ARG62711 anti-CD11a / LFA1 alpha antibody [M17 / 4] (Functional Grade) FACS image

Flow Cytometry: Separation of murine myeloid cells (red-filled) from cellular debris (black-dashed). Murine splenocytes stained with ARG62711 anti-CD11a / LFA1 alpha antibody [M17 / 4] (Functional Grade) at 0.6 µg/ml dilution, followed by APC-conjugated Donkey anti-Rat antibody.