

ARG62720 anti-CD11c antibody [BU15] (FITC)

Package: 100 tests, 50 tests
Store at: 4°C

Summary

Product Description	FITC-conjugated Mouse Monoclonal antibody [BU15] recognizes CD11c
Tested Reactivity	Hu, Mk
Tested Application	FACS
Specificity	The clone BU15 reacts with CD11c (alphaX, p150), a 150 kDa integrin expressed mainly on dendritic cells and tissue macrophages. HLDA III; WS Code M 256 HLDA V; WS Code AS S143 HLDA VI; WS Code AS Ref.6
Host	Mouse
Clonality	Monoclonal
Clone	BU15
Isotype	IgG1
Target Name	CD11c
Immunogen	Dendritic cells of synovial fluid
Conjugation	FITC
Alternate Names	CD antigen CD11c; Leu M5; CD11C; SLEB6; Integrin alpha-X; Leukocyte adhesion glycoprotein p150,95 alpha chain; Leukocyte adhesion receptor p150,95; CD11 antigen-like family member C

Application Instructions

Application table	Application	Dilution
	FACS	20 µl / 10 ⁶ cells

Application Note * The dilutions indicate recommended starting dilutions and the optimal dilutions or concentrations should be determined by the scientist.

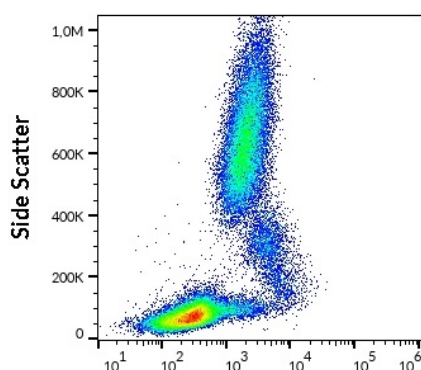
Properties

Form	Liquid
Purification Note	The purified antibody is conjugated with Fluorescein isothiocyanate (FITC) under optimum conditions. The reagent is free of unconjugated FITC and adjusted for direct use. No reconstitution is necessary.
Buffer	PBS, 15 mM Sodium azide and 0.2% (w/v) high-grade protease free BSA
Preservative	15 mM Sodium azide
Stabilizer	0.2% (w/v) high-grade protease free BSA
Storage instruction	Aliquot and store in the dark at 2-8°C. Keep protected from prolonged exposure to light. Avoid repeated freeze/thaw cycles. Suggest spin the vial prior to opening. The antibody solution should be gently mixed before use.

Bioinformation

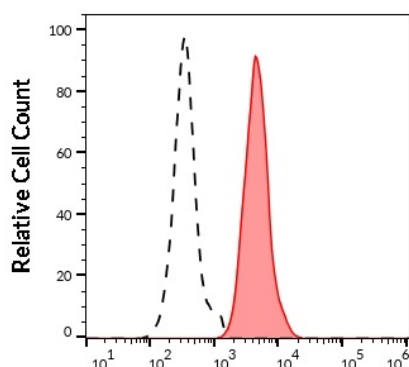
Database links	GeneID: 3687 Human Swiss-port # P20702 Human
Gene Symbol	ITGAX
Gene Full Name	integrin, alpha X (complement component 3 receptor 4 subunit)
Background	CD11c (p150, alphaX integrin subunit) forms complex with CD18 (beta2 integrin subunit) and is expressed mainly on tissue macrophages and dendritic cells. CD11c binds to complement fragment iC3b, fibrinogen, VCAM-1 and ICAM-2 or e.g. CD90. Like other beta2 integrins, CD11c/CD18 plays roles in cell migration and phagocytosis. Moreover, interaction of CD11c/CD18 with plasminogen regulates plasmin activities, and interaction with heparin counteracts binding of iC3b.
Function	Integrin alpha-X/beta-2 is a receptor for fibrinogen. It recognizes the sequence G-P-R in fibrinogen. It mediates cell-cell interaction during inflammatory responses. It is especially important in monocyte adhesion and chemotaxis. [UniProt]
Research Area	Developmental Biology antibody; Immune System antibody; Signaling Transduction antibody
Calculated Mw	128 kDa

Images



ARG62720 anti-CD11c antibody [BU15] (FITC) FACS image

Flow Cytometry: Human peripheral whole blood stained with ARG62720 anti-CD11c antibody [BU15] (FITC) (20 µl reagent / 100 µl of peripheral whole blood).



ARG62720 anti-CD11c antibody [BU15] (FITC) FACS image

Flow Cytometry: Separation of human monocytes (red-filled) from CD11c negative lymphocytes (black-dashed). Human peripheral whole blood stained with ARG62720 anti-CD11c antibody [BU15] (FITC) (20 µl reagent / 100 µl of peripheral whole blood).