

ARG62762 anti-CD1a antibody [HI149] (FITC)

Package: 100 tests
Store at: 4°C

Summary

Product Description	FITC-conjugated Mouse Monoclonal antibody [HI149] recognizes CD1a
Tested Reactivity	Hu
Tested Application	FACS
Specificity	The clone HI149 reacts with CD1a (T6), a 49 kDa polypeptide associated with beta2-microglobulin expressed on cortical thymocytes (strongly), Langerhans cells, dendritic cells and some T cell leukemias and lymphomas. does not react with peripheral blood T and B lymphocytes, monocytes, granulocytes, platelets and erythrocytes. HLDA V; WS Code CD01.01
Host	Mouse
Clonality	Monoclonal
Clone	HI149
Isotype	IgG1
Target Name	CD1a
Species	Human
Immunogen	Human thymocytes
Conjugation	FITC
Alternate Names	R4; FCB6; CD antigen CD1a; T6; T-cell surface antigen T6/Leu-6; hTa1 thymocyte antigen; T-cell surface glycoprotein CD1a; CD1; HTA1

Application Instructions

Application table	Application	Dilution
	FACS	20 µl / 10 ⁶ cells
Application Note	* The dilutions indicate recommended starting dilutions and the optimal dilutions or concentrations should be determined by the scientist.	

Properties

Form	Liquid
Purification Note	The purified antibody is conjugated with Fluorescein isothiocyanate (FITC) under optimum conditions. The reagent is free of unconjugated FITC and adjusted for direct use. No reconstitution is necessary.
Buffer	PBS, 15 mM Sodium azide and 0.2% (w/v) high-grade protease free BSA
Preservative	15 mM Sodium azide
Stabilizer	0.2% (w/v) high-grade protease free BSA
Storage instruction	Aliquot and store in the dark at 2-8°C. Keep protected from prolonged exposure to light. Avoid

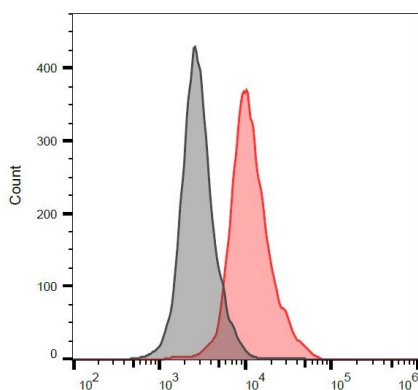
repeated freeze/thaw cycles. Suggest spin the vial prior to opening. The antibody solution should be gently mixed before use.

Note For laboratory research only, not for drug, diagnostic or other use.

Bioinformation

Database links	GeneID: 909 Human Swiss-port # P06126 Human
Gene Symbol	CD1A
Gene Full Name	CD1a molecule
Background	CD1a, together with CD1b and c, belongs to group 1 of CD1 glycoproteins. These proteins serve as antigen-presenting molecules for a subset of T cells that responds to specific lipids and glycolipids found in the cell walls of bacterial pathogens or self-glycolipid antigens such as gangliosides, and they have also roles in antiviral immunity. Unlike CD1b, CD1a is excluded from late endosomal compartments and instead traffics independently in the recycling pathway of the early endocytic system, and CD1a antigen presentation is independent upon vesicular acidification.
Function	Antigen-presenting protein that binds self and non-self lipid and glycolipid antigens and presents them to T-cell receptors on natural killer T-cells. [UniProt]
Highlight	Related products: CD1a antibodies: Anti-Mouse IgG secondary antibodies: Related news: Detecting exosomal HMGB1 for ICD research
Research Area	Immune System antibody
Calculated Mw	37 kDa

Images



ARG62762 anti-CD1a antibody [HI149] (FITC) FACS image

Flow Cytometry: MOLT-4 cells (red) and blank samples (black) stained with ARG62762 anti-CD1a antibody [HI149] (FITC).