

ARG62969 anti-Cytokeratin (pan) antibody [C-11]

Package: 100 µg, 50 µg
Store at: -20°C

Summary

Product Description	Mouse Monoclonal antibody [C-11] recognizes Cytokeratin (pan)
Tested Reactivity	Hu, Ms, Rat, Mamm
Tested Application	CyTOF®-candidate, FACS, ICC/IF, IHC-P, IP, WB
Specificity	The clone C-11 reacts with Cytokeratin peptides 4, 5, 6, 8, 10, 13, 18. Cytokeratins are a member of intermediate filaments subfamily represented in epithelial tissues.
Host	Mouse
Clonality	Monoclonal
Clone	C-11
Isotype	IgG1
Target Name	Cytokeratin (pan)
Species	Human
Immunogen	Keratin-enriched preparation from human epidermoid carcinoma cell line A431.
Conjugation	Un-conjugated
Alternate Names	67 kDa cytokeratin; KRT1A; EPPK; Keratin, type II cytoskeletal 1; EHK1; K1; Keratin-1; CK1; Cytokeratin-1; Hair alpha protein; Type-II keratin Kb1; CK-1; NEPPK; EHK

Application Instructions

Application table	Application	Dilution
	CyTOF®-candidate	Assay-dependent
	FACS	1 µg/ml
	ICC/IF	Assay-dependent
	IHC-P	2 - 8 µg/ml
	IP	Assay-dependent
	WB	1 - 2 µg/ml
	Application Note	* The dilutions indicate recommended starting dilutions and the optimal dilutions or concentrations should be determined by the scientist.

Properties

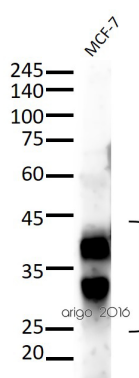
Form	Liquid
Purification	Purified from ascites by protein-A affinity chromatography.
Purity	> 95% (by SDS-PAGE)

Buffer	PBS (pH 7.4) and 15 mM Sodium azide
Preservative	15 mM Sodium azide
Concentration	1 mg/ml
Storage instruction	For continuous use, store undiluted antibody at 2-8°C for up to a week. For long-term storage, aliquot and store at -20°C or below. Storage in frost free freezers is not recommended. Avoid repeated freeze/thaw cycles. Suggest spin the vial prior to opening. The antibody solution should be gently mixed before use.
Note	For laboratory research only, not for drug, diagnostic or other use.

Bioinformation

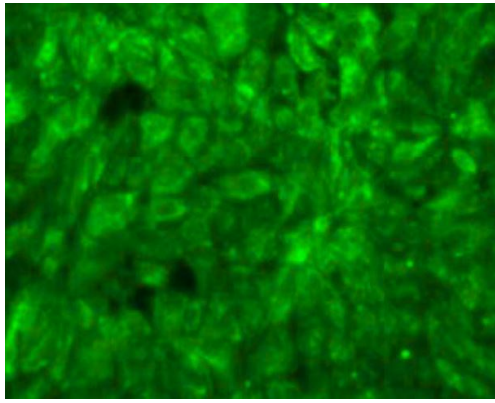
Gene Symbol	KRT1
Gene Full Name	keratin 1, type II
Background	Cytokeratins are a subfamily of intermediate filaments and characterized by remarkable biochemical diversity. Cytokeratins are represented in epithelial tissues by at least 20 different polypeptides, molecular weight between 40 kDa and 68 kDa. The individual cytokeratin polypeptides are designated 1 to 20 and divided into the type I (acidic cytokeratins 9-20) and type II (basic to neutral cytokeratins 1-8) families.
Function	May regulate the activity of kinases such as PKC and SRC via binding to integrin beta-1 (ITB1) and the receptor of activated protein kinase C (RACK1/GNB2L1). In complex with C1QBP is a high affinity receptor for kininogen-1/HMWK. [UniProt]
Highlight	Related Antibody Duos and Panels: ARG30319 Carcinoma / Sarcoma Antibody Duo Related products: Cytokeratin antibodies: Cytokeratin Duos / Panels: Anti-Mouse IgG secondary antibodies:
Research Area	Signaling Transduction antibody; Carcinoma Marker antibody
Calculated Mw	66 kDa
PTM	Undergoes deimination of some arginine residues (citrullination).

Images



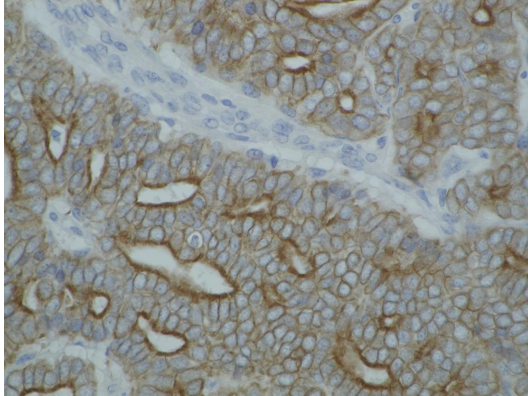
ARG62969 anti-Cytokeratin (pan) antibody [C-11] WB image

Western blot: 30 µg of MCF-7 cell lysate stained with ARG62969 anti-Cytokeratin (pan) antibody [C-11] at 1:500 dilution.



ARG62969 anti-Cytokeratin (pan) antibody [C-11] ICC/IF image

Immunofluorescence: Rat endometrial epithelial (REE) cultured cells fixed with neutral buffered formalin for 10 min, and permeabilized with cold-methanol at -20°C for 10 min and then stained with ARG62969 anti-Cytokeratin (pan) antibody [C-11].



ARG62969 anti-Cytokeratin (pan) antibody [C-11] IHC-P image

Immunohistochemistry: Paraffin-embedded sections of guinea pig breast carcinoma stained with ARG62969 anti-Cytokeratin (pan) antibody [C-11].