

ARG62980 anti-Cytokeratin 5 + 8 antibody [C-50]

Package: 100 µg
Store at: -20°C

Summary

Product Description	Mouse Monoclonal antibody [C-50] recognizes Cytokeratin 5 + 8
Tested Reactivity	Hu, Ms, Rat, Bov, Dog, Hm, Pig, Sheep
Species Does Not React With	Chk, Xenopus laevis
Tested Application	ICC/IF, IHC-P, IP, WB
Specificity	The antibody C-50 reacts with cytokeratin peptides 5 and 8 (58 and 53 kDa). Cytokeratins are members of intermediate filaments subfamily of intracellular proteins represented in epithelial tissues.
Host	Mouse
Clonality	Monoclonal
Clone	C-50
Isotype	IgG1
Target Name	Cytokeratin 5 + 8
Immunogen	Cytoskeleton preparation from HeLa cells.
Conjugation	Un-conjugated
Alternate Names	DDD1; 58 kDa cytokeratin; Keratin, type II cytoskeletal 5; EBS2; Keratin-5; Cytokeratin-5; CK5; KRT5A; K5; CK-5; Type-II keratin Kb5; DDD

Application Instructions

Application table	Application	Dilution
	ICC/IF	Assay-dependent
	IHC-P	10 µg/ml
	IP	Assay-dependent
	WB	Assay-dependent
Application Note	* The dilutions indicate recommended starting dilutions and the optimal dilutions or concentrations should be determined by the scientist.	
Positive Control	IHC-P: Human prostate	

Properties

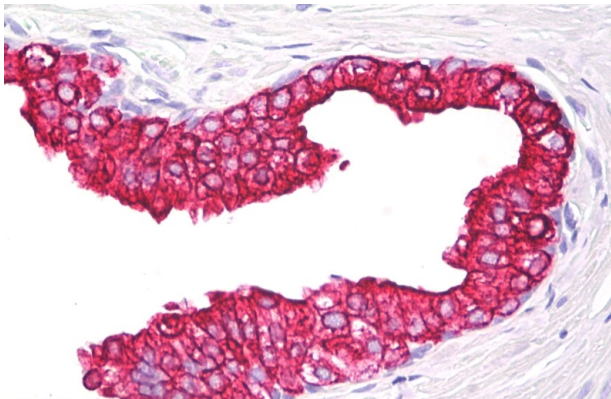
Form	Liquid
Purification	Purified from ascites by protein-A affinity chromatography.
Purity	> 95% (by SDS-PAGE)
Buffer	PBS (pH 7.4) and 15 mM Sodium azide

Preservative	15 mM Sodium azide
Concentration	1 mg/ml
Storage instruction	For continuous use, store undiluted antibody at 2-8°C for up to a week. For long-term storage, aliquot and store at -20°C or below. Storage in frost free freezers is not recommended. Avoid repeated freeze/thaw cycles. Suggest spin the vial prior to opening. The antibody solution should be gently mixed before use.
Note	For laboratory research only, not for drug, diagnostic or other use.

Bioinformation

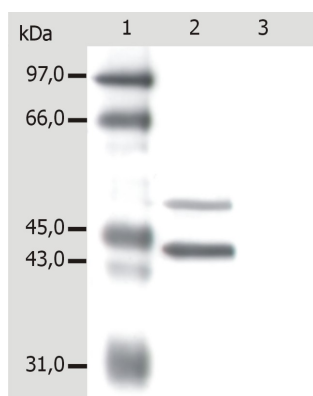
Gene Symbol	KRT5
Gene Full Name	keratin 5, type II
Background	Cytokeratin 5 is a member of the keratin gene family. The type II cytokeratins consist of basic or neutral proteins which are arranged in pairs of heterotypic keratin chains coexpressed during differentiation of simple and stratified epithelial tissues. This type II cytokeratin is specifically expressed in the basal layer of the epidermis with family member KRT14. Mutations in these genes have been associated with a complex of diseases termed epidermolysis bullosa simplex. The type II cytokeratins are clustered in a region of chromosome 12q12-q13. [provided by RefSeq, Jul 2008]
Research Area	Signaling Transduction antibody
Calculated Mw	62 kDa

Images



ARG62980 anti-Cytokeratin 5 + 8 antibody [C-50] IHC-P image

Immunohistochemistry: Paraffin-embedded Human prostate tissue stained with ARG62980 anti-Cytokeratin 5 + 8 antibody [C-50].



ARG62980 anti-Cytokeratin 5 + 8 antibody [C-50] WB image

Western blot: MCF-7 whole cell lysate stained with ARG62980 anti-Cytokeratin 5 + 8 antibody [C-50].

Lane 1: MW standard

Lane 2: Immunostaining with ARG62980

Lane 3: Immunostaining with Isotype Mouse IgG1 control.