

ARG62981 anti-Cytokeratin 7 + 17 antibody [C-46]

Package: 100 µg
Store at: -20°C

Summary

Product Description	Mouse Monoclonal antibody [C-46] recognizes Cytokeratin 7 + 17
Tested Reactivity	Hu, Bov, Pig
Species Does Not React With	Ms, Rat, Rb
Tested Application	ICC/IF, IHC-P, IP, WB
Specificity	The clone C-46 reacts with Cytokeratin peptides 7 and 17 (54 and 46 kDa). Cytokeratins are a member of intermediate filaments subfamily represented in epithelial tissues.
Host	Mouse
Clonality	Monoclonal
Clone	C-46
Isotype	IgG1
Target Name	Cytokeratin 7 + 17
Species	Human
Immunogen	Cytoskeleton preparation of HeLa human cervix carcinoma cell line.
Conjugation	Un-conjugated
Alternate Names	SCL; Sarcolectin; CK-7; Cytokeratin-7; CK7; Keratin, type II cytoskeletal 7; Keratin-7; K7; K2C7; Type-II keratin Kb7

Application Instructions

Application table	Application	Dilution
	ICC/IF	Assay-dependent
	IHC-P	10 µg/ml
	IP	Assay-dependent
	WB	1 - 2 µg/ml
Application Note	WB: Sample preparation: Lysis 1% lauryl maltoside for 1 hour, 5x10 sec. sonication; 5 min. in hot Laemmli buffer (reducing condition). IHC-P: Pretreatment: 0.1% pepsin for 30 min at 37°C. Incubation: 4°C overnight. Application note: Chromogen DAB. * The dilutions indicate recommended starting dilutions and the optimal dilutions or concentrations should be determined by the scientist.	
Positive Control	WB: HeLa IHC-P: Pancreas	

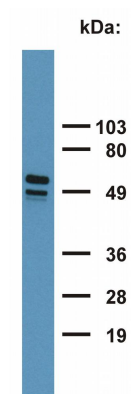
Properties

Form	Liquid
------	--------

Purification	Purified from hybridoma culture supernatant by protein A-affinity chromatography.
Purity	> 95% (by SDS-PAGE)
Buffer	PBS (pH 7.4) and 15 mM Sodium azide
Preservative	15 mM Sodium azide
Concentration	1 mg/ml
Storage instruction	For continuous use, store undiluted antibody at 2-8°C for up to a week. For long-term storage, aliquot and store at -20°C or below. Storage in frost free freezers is not recommended. Avoid repeated freeze/thaw cycles. Suggest spin the vial prior to opening. The antibody solution should be gently mixed before use.
Note	For laboratory research only, not for drug, diagnostic or other use.

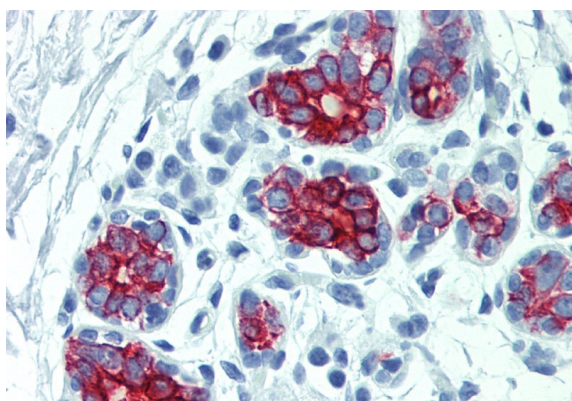
Bioinformation

Database links	GeneID: 3855 Human GeneID: 535697 Bovine Swiss-port # P08729 Human Swiss-port # Q29S21 Bovine
Gene Symbol	KRT7
Gene Full Name	keratin 7, type II
Background	Cytokeratin 7 is a member of the keratin gene family. The type II cytokeratins consist of basic or neutral proteins which are arranged in pairs of heterotypic keratin chains coexpressed during differentiation of simple and stratified epithelial tissues. This type II cytokeratin is specifically expressed in the simple epithelia lining the cavities of the internal organs and in the gland ducts and blood vessels. The genes encoding the type II cytokeratins are clustered in a region of chromosome 12q12-q13. Alternative splicing may result in several transcript variants; however, not all variants have been fully described. [provided by RefSeq, Jul 2008]
Function	Cytokeratin 7 blocks interferon-dependent interphase and stimulates DNA synthesis in cells. Involved in the translational regulation of the human papillomavirus type 16 E7 mRNA (HPV16 E7). [UniProt]
Research Area	CK7/CK20 Carcinoma Study antibody
Calculated Mw	51 kDa
PTM	Arg-20 is dimethylated, probably to asymmetric dimethylarginine.



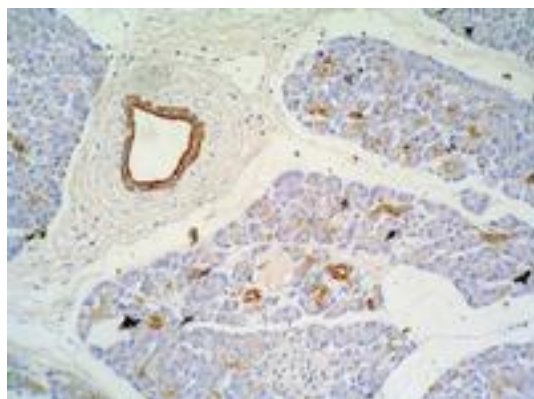
ARG62981 anti-Cytokeratin 7 + 17 antibody [C-46] WB image

Western blot: HeLa cell lysate stained with ARG62981 anti-Cytokeratin 7 + 17 antibody [C-46].



ARG62981 anti-Cytokeratin 7 + 17 antibody [C-46] IHC-P image

Immunohistochemistry: Paraffin-embedded Human breast tissue stained with ARG62981 anti-Cytokeratin 7 + 17 antibody [C-46].



ARG62981 anti-Cytokeratin 7 + 17 antibody [C-46] IHC-P image

Immunohistochemistry: Pancreas (paraffin-embedded sections) stained with ARG62981 anti-Cytokeratin 7 + 17 antibody [C-46].